

SW SERIES

Screw Compressors for Refrigeration

冷冻螺杆压缩机

30-240Hp, 118-700m³/h



MODEL DESIGNATION

型号说明

2

SW

COMPRESSOR / 压缩机		S	W	1	H	4000
COMPRESSOR TYPE / 压缩机类型						
S	Semi-hermetic / 半封闭SW系列					
SERIES / 系列						
W	Screw compressor / 螺杆压缩机					
VERSION / 版本						
1	Without internal oil separator / 不带内置油分离器					
3	Without internal oil separator / 不带内置油分离器					
O	With internal oil separator / 带内置油分离器					
MOTOR SIZE / 电机类型						
H	Full size electrical motor 高温压缩机电机					
L	Small size electrical motor 低温压缩机电机					
NOMINAL MOTOR POWER / 电机名义功率						
4000	Hp x 100					

```
graph TD; S[S] --- S_row[Semi-hermetic]; W[W] --- W_row[Screw compressor]; 1[1] --- 1_row[Without internal oil separator]; H[H] --- H_row[Full size electrical motor]; 4000[4000] --- 4000_row[Hp x 100];
```

INTRODUCTION

产品介绍

Great changes have been made during the last decade in the industrial and commercial refrigeration field.

Together with compressor reliability and availability, attention towards other factors such as efficiency, noiselessness, compactness, and the simplicity of installation and maintenance have also grown progressively.

In the air conditioning field, such needs have been satisfied by compact screw compressors that, as a result, have spread progressively to all markets.

On the basis of the experience and business success of its compact series, RefComp has developed a full range of semi-hermetic screw compressors specifically designed for refrigeration applications.

The full range has the capacity control with slide valve.

在过去的数十年间，工业和商业冷冻发生巨大的变化。

大家对压缩机的关注将不仅局限于其可靠性和适应性，而将更多关注其效率、噪音、安装的简便及维护的使用等更多方面，RefComp冷冻螺杆压缩机也以此为方向，努力做到尽善尽美。

比如在空调领域，我们的紧凑型螺杆压缩机正因为具备上述各优点，已经在整个市场中得到了普遍的认可。

基于紧凑型压缩机系列的成功研发经验，RefComp发展出全系列半封闭螺杆压缩机，特别为冷冻行业的应用而设计出了冷冻螺杆压缩机。

此系列的产品全系列采用滑阀调节制冷量。



TECHNICAL DATA

技术数据

4

SW

		SW1H							
Compressor model 压缩机型号		4000	5000	6000	7500	9000	10500	11500	12500
Nominal motor power 电机名义功率	Hp/kW	40/30	50/37	60/45	75/55	90/67	105/78	115/89	125/89
Displacement at 50/60 Hz 排气量 50/60Hz	m ³ /h	118/142	150/180	175/210	205/246	237/284	286/343	318/382	341/409
Weight 重量	Kg	245	255	265	410	420	535	540	545
Discharge line, internal Ø 排气管内径尺寸Ø	mm /inches	42 / 1 5/8"	42 / 1 5/8"	42 / 1 5/8"	54 / 2 1/8"	54 / 2 1/8"	54 / 2 1/8"	54 / 2 1/8"	54 / 2 1/8"
Suction line, internal Ø 吸气管内径尺寸Ø	mm/inches	54 / 2 1/8"	54 / 2 1/8"	54 / 2 1/8"	67 / 2 5/8"	67 / 2 5/8"	80 / 3 1/8"	80 / 3 1/8"	80 / 3 1/8"
Oil circuit connection 油路接头	mm/inches	Ø 16mm / 5/8" SAE							
Capacity control 能量调节		Step/有级: 100,75,50,min%(Stepless/无级:100...50%or/或100...min% on request/可按需提供)							
Protection device 保护模块		INT 69 SNY							
Standard motor ⁽¹⁾ 标准电机		400V/3/50Hz - 460/3/60Hz							
Star/Delta Starting current Star/DOL ⁽²⁾ 星/三角启动电流 星/三角	A	131/398	134/406	182/547	139/459	193/580	338/1015	318/953	318/953
Max running current ⁽²⁾ 最大运行电流	A	75	90	105	124	140	168	182	196

		SW3L							
Compressor model 压缩机型号		3000	4000	5000	6000	7000	8000	9500	10500
Nominal motor power 电机名义功率	Hp/kW	30/22	40/30	50/37	60/45	70/52	80/60	95/71	105/78
Displacement at 50/60 Hz 排气量 50/60Hz	m ³ /h	118/142	150/180	175/210	205/246	237/284	286/343	318/382	341/409
Weight 重量	Kg	245	255	265	410	420	520	525	530
Discharge line, internal Ø 排气管内径尺寸Ø	mm/inches	42 / 1 5/8"	42 / 1 5/8"	42 / 1 5/8"	54 / 2 1/8"	54 / 2 1/8"	54 / 2 1/8"	54 / 2 1/8"	54 / 2 1/8"
Suction line, internal Ø 吸气管内径尺寸Ø	mm/inches	54 / 2 1/8"	54 / 2 1/8"	54 / 2 1/8"	67 / 2 5/8"	67 / 2 5/8"	80 / 3 1/8"	80 / 3 1/8"	80 / 3 1/8"
Oil circuit connection 油路接头	mm/inches	Ø 16mm / 5/8" SAE							
Capacity control 能量调节		Step/有级: 100,75,50,min%(Stepless/无级:100...50%or/或100...min% on request/可按需提供)							
Protection device 保护模块		INT 69 SNY							
Standard motor ⁽¹⁾ 标准电机		400V/3/50Hz - 460/3/60Hz							
Star/Delta Starting current Star/DOL ⁽²⁾ 星/三角启动电流 星/三角	A	110/331	131/398	134/406	139/422	139/459	223/670	318/953	318/953
Max running current ⁽²⁾ 最大运行电流	A	65	80	88	103	117	139	154	163

(1) Voltage tolerance ± 10% / 电压允许偏差范围 ± 10%

(2) Based on Leonardo/基于LEONARDO 1.7.3

TECHNICAL DATA

技术数据

		SW1H					
Compressor model		14000	16000	19000	21000	24000	25000
电机名义功率 Nominal motor power	Hp/kW	150 / 112	170 / 127	200 / 149	220 / 164	240 / 179	240 / 179
排气量50/60Hz Displacement at 50/60 Hz	m³/h	402 / 482	445 / 534	510 / 612	562 / 674	600 / 720	700 / 840
重量 Weight	Kg	665	675	710	1030	1050	980
排气管内径Ø Discharge line, internal Ø	mm/inches	80 / (3-1/8")	80 / (3-1/8")	80 / (3-1/8")	80 / (3-1/8")	80 / (3-1/8")	80 / (3-1/8")
吸气管内径Ø Suction line, internal Ø	mm/inches	92 / (3-5/8")	92 / (3-5/8")	92 / (3-5/8")	104,8 / (4-1/8")	104,8 / (4-1/8")	104,8 / (4-1/8")
油路接头 Oil circuit connection	mm/inches	Ø 16mm / 5/8" SAE					
能量控制 Capacity control		Step/有级:100,75,50,min%(Stepless/无级:100...50%or/或100...min% on request/可按需提供)					
保护模块 Protection device		INT 69 SNY					
标准电机 ⁽¹⁾ Standard motor		Y / Δ- 400V/3/50Hz - 460/3/60Hz					
星/三角启动电流 ⁽²⁾ Star/Delta Starting current (Y / Δ)	A	354 / 1155	374 / 1155	453 / 1333	543 / 1645	595 / 1802	595 / 1802
最大运行启动电流 ⁽²⁾ Max running current	A	249	270	305	335	360	410

		SW3L					
Compressor model		11500	13000	16000	18000	20000	22000
电机名义功率 Nominal motor power	Hp/kW	115 / 89	130 / 98	170 / 127	180 / 135	200 / 149	220 / 164
排气量50/60Hz Displacement at 50/60 Hz	m³/h	380 / 456	445 / 534	510 / 612	562 / 674	600 / 720	700 / 840
重量 Weight	Kg	665	675	710	1030	1050	980
排气管内径 Ø Discharge line, internal Ø	mm/inches	80 / (3-1/8")	80 / (3-1/8")	80 / (3-1/8")	80 / (3-1/8")	80 / (3-1/8")	80 / (3-1/8")
吸气管内径 Ø Suction line, internal Ø	mm/inches	92 / (3-5/8")	92 / (3-5/8")	92 / (3-5/8")	104,8 / (4-1/8")	104,8 / (4-1/8")	104,8 / (4-1/8")
油路接头 Oil circuit connection	mm/inches	Ø 16mm / 5/8" SAE					
能量控制 Capacity control		Step/有级:100,75,50,min%(Stepless/无级:100...50%or/或100...min% on request/可按需提供)					
保护模块 Protection device		INT 69 SNY					
标准电机 ⁽¹⁾ Standard motor		Y / Δ- 400V/3/50Hz - 460/3/60Hz					
星/三角启动电流 ⁽²⁾ Star/Delta Starting current (Y / Δ)	A	276 / 876	354 / 1155	374 / 1155	453 / 1333	543 / 1645	543 / 1645
最大运行启动电流 ⁽²⁾ Max running current	A	196	210	236	250	270	300

TECHNICAL DATA

技术数据

6

SW

		SWOH							
Compressor model 压缩机型号		4000	5000	6000	7500	9000	10500	11500	12500
Nominal motor power 电机名义功率	Hp/kW	40/30	50/37	60/45	75/55	90/67	105/78	115/89	125/89
Displacement at 50/60 Hz 排气量 50/60Hz	m ³ /h	118/142	150/180	175/210	205/246	237/284	286/343	318/382	341/409
Weight 重量	Kg	325	330	335	510	515	615	590	625
Discharge line, internal Ø 排气管内径尺寸Ø	mm /inches	42 / 1 5/8"	42 / 1 5/8"	42 / 1 5/8"	54 / 2 1/8"	54 / 2 1/8"	54 / 2 1/8"	54 / 2 1/8"	54 / 2 1/8"
Suction line, internal Ø 吸气管内径尺寸Ø	mm/inches	54 / 2 1/8"	54 / 2 1/8"	54 / 2 1/8"	67 / 2 5/8"	67 / 2 5/8"	80 / 3 1/8"	80 / 3 1/8"	80 / 3 1/8"
Oil charge 油充注量	L	6	6	6	7	7	10	10	10
Capacity control 能量调节		Step/有级: 100,75,50,min%(Stepless/无级:100...50%or/或100...min% on request/可按需提供)							
Protection device 保护模块		INT 69 SNY							
Standard motor ⁽¹⁾ 标准电机		400V/3/50Hz - 460/3/60Hz							
Star/Delta Starting current Star/DOL 星/三角启动电流 星/三角	A	131/398	134/406	182/547	139/459	193/580	338/1015	318/953	318/953
Max running current 最大运行电流	A	75	90	105	124	140	180	182	196

		SWOL							
Compressor model 压缩机型号		3000	4000	5000	6500	8000	9500	10500	11500
Nominal motor power 电机名义功率	Hp/kW	30/22	40/30	50/37	65/48	80/60	95/71	105/78	115/89
Displacement at 50/60 Hz 排气量 50/60Hz	m ³ /h	118/142	150/180	175/210	205/246	237/284	286/343	318/382	341/409
Weight 重量	Kg	325	330	335	510	515	615	590	625
Discharge line, internal Ø 排气管内径尺寸Ø	mm/inches	42 / 1 5/8"	42 / 1 5/8"	42 / 1 5/8"	54 / 2 1/8"	54 / 2 1/8"	54 / 2 1/8"	54 / 2 1/8"	54 / 2 1/8"
Suction line, internal Ø 吸气管内径尺寸Ø	mm/inches	54 / 2 1/8"	54 / 2 1/8"	54 / 2 1/8"	67 / 2 5/8"	67 / 2 5/8"	80 / 3 1/8"	80 / 3 1/8"	80 / 3 1/8"
Oil charge 油充注量	L	6	6	6	7	7	10	10	10
Capacity control 能量调节		Step/有级: 100,75,50,min%(Stepless/无级:100...50%or/或100...min% on request/可按需提供)							
Protection device 保护模块		INT 69 SNY							
Standard motor ⁽¹⁾ 标准电机		400V/3/50Hz - 460/3/60Hz							
Star/Delta Starting current Star/DOL ⁽²⁾ 星/三角启动电流 星/三角	A	110/331	131/398	134/406	139/422	139/459	223/670	318/953	318/953
Max running current ⁽²⁾ 最大运行电流	A	65	80	88	103	117	139	154	163

(1) Voltage tolerance ± 10% / 电压允许偏差范围 ± 10%

(2) Based on Leonado/基于LEONADO 1.7.3

TECHNICAL DATA

技术数据

		SWOH					
压缩机型号 Compressor model		14000	16000	19000	21000	24000	25000
电机名义功率 Nominal motor power	Hp/kW	150 / 112	170 / 127	200 / 149	220 / 164	240 / 179	240 / 179
排气量50/60Hz Displacement at 50/60 Hz	m³/h	402 / 482	445 / 534	510 / 612	562 / 674	600 / 720	700 / 840
重量 Weight	Kg	730	740	775	1010	1030	1020
排气管内径Ø Discharge line, internal Ø	mm/inches	80 / (3-1/8")	80 / (3-1/8")	80 / (3-1/8")	80 / (3-1/8")	80 / (3-1/8")	80 / (3-1/8")
吸气管内径Ø Suction line, internal Ø	mm/inches	92 / (3-5/8")	92 / (3-5/8")	92 / (3-5/8")	104,8 / (4-1/8")	104,8 / (4-1/8")	104,8 / (4-1/8")
油充注量 Oil charge	L	14	14	16	19	19	20
能量控制 Capacity control		Step/有级: 100,75,50,min%(Stepless/无级: 100...50%or/或100...min% on request/可按需提供)					
保护模块 Protection device		INT 69 SNY					
标准电机 ⁽¹⁾ Standard motor		Y / Δ- 400V/3/50Hz - 460/3/60Hz					
星/三角启动电流 ⁽²⁾ Star/Delta Starting current (Y / Δ)	A	354 / 1155	374 / 1155	453 / 1333	543 / 1645	595 / 1802	595 / 1802
最大运行启动电流 ⁽²⁾ Max running current	A	249	270	305	335	360	410

		SWOL					
压缩机型号 Compressor model		13000	15000	17000	20000	22000	23000
电机名义功率 Nominal motor power	Hp/kW	120 / 89	150 / 112	170 / 127	200 / 149	220 / 164	220 / 164
排气量50/60Hz Displacement at 50/60 Hz	m³/h	402 / 482	445 / 534	510 / 612	562 / 674	600 / 720	700 / 840
重量 Weight	Kg	730	740	775	1010	1030	1020
排气管内径Ø Discharge line, internal Ø	mm/inches	80 / (3-1/8")	80 / (3-1/8")	80 / (3-1/8")	80 / (3-1/8")	80 / (3-1/8")	80 / (3-1/8")
吸气管内径Ø Suction line, internal Ø	mm/inches	92 / (3-5/8")	92 / (3-5/8")	92 / (3-5/8")	104,8 / (4-1/8")	104,8 / (4-1/8")	104,8 / (4-1/8")
油充注量 Oil charge	L	14	14	16	19	19	20
能量控制 Capacity control		Step/有级: 100,75,50,min%(Stepless/无级: 100...50%or/或100...min% on request/可按需提供)					
保护模块 Protection device		INT 69 SNY					
标准电机 ⁽¹⁾ Standard motor		Y / Δ- 400V/3/50Hz - 460/3/60Hz					
星/三角启动电流 ⁽²⁾ Star/Delta Starting current (Y / Δ)	A	276 / 876	354 / 1155	374 / 1155	453 / 1333	543 / 1645	543 / 1645
最大运行启动电流 ⁽²⁾ Max running current	A	196	210	236	259	270	310

BENEFITS

技术特点

8

SW

VERSATILITY

Available in two versions, to suit a multitude of possible applications in a better way: the SW3L models, characterised by “small size” electric motor, are optimised for applications at low evaporating temperatures (up to -50 [°C]); the SW1H and models, characterised by “full size” electric motor, are excellent for medium/high evaporating temperatures (up to $+12$ [°C] with R22)

公共特性

包含2类机型，可针对不同的应用工况最佳选型：SW3L 型号的压缩机，电机为低温压缩机电机，适合应用于低蒸发温度的工况(蒸发温度最低可至 -50 [°C])；SW1H型号的压缩机，电机为高温压缩机电机，适合应用于中、高蒸发温度的工况(如果使用R22，蒸发温度最高可至 $+12$ [°C])

EFFICIENCY

Performance and energy efficiency can be further increased with the ECONOMIZER circuit, in particular for medium and high compression ratios.

高效率

使用经济器，可进一步提高性能和能效，对于中、高压比的情况尤其适合。

SILENCE AND LACK OF VIBRATION

噪音低、振动小

COMPACTNESS AND INSTALLATION SIMPLICITY

紧凑、易安装

RELIABILITY AND OPERATING SAFETY

可靠、操作安全

OPTIMUM LUBRIFICATION

卓越的润滑特性

EASY MAINTENANCE

维护简易

SOFTWARE, DOCUMENTS AND REFCOMP SUPPORT

软件、文档和技术支持

Refcomp may proceed directly with the selection of components needed in refrigeration machines:

- Oil separator
- Oil cooler
- Economizer

如有其他制冷系统部件的需求，RefComp可以直接进行选型：

- 油分离器
- 油冷却器
- 经济器

DELIVERY

供货

COMPONENT

The standard delivery consists of: Y/D motor (400 [V] / 3 / 50 [Hz] - 460 [V] / 3 / 60 [Hz]); suction solder connection; discharge shut-off valve; integrated check valve; integrated safety relief valve; connection for oil injection; capacity control (SW: 4 steps - 100, 75, 50, min% - or stepless 100 or 50...min%), motor with 6 PTC sensors embedded, PTC discharge temperature sensor, electronic protection device, electrical box with IP54 enclosure class, nitrogen protective charge, rubber anti-vibration dampers. Oil return line kit provided with: solenoid valve, replaceable cartridge type filter, flow-switch, sight glass, electronic control module INT 69 B2 and electrolytic condenser.

ACCESSORIES

On request the following accessories are available: special motors, suction shut-off valve, conversion kit from stepless to step (or vice versa) capacity control for SW models, connection for liquid injection, ECO connection with shut-off valve, links for direct starting. The Standard and/or electrical accessories (solenoid valves, INT 69 B2 motor protection device) are suitable for 230 [V] -1-50 / 60 [Hz] power supply. REFCOMP protection module is suitable for 230 / 115 [V] -1-50 / 60 [Hz]. However special voltages are also available upon request.

主要部件

标准供货范围包括：Y/D(星/三角)电机(400V/3/50Hz-460V/3/60Hz),吸气截止阀, 排气截止阀, 内置排气单向阀, 内置安全阀, 油喷接头, 能量调节组件(SW:4级-100,75,50,最小%/无级-100或50%...最小%), 内埋有6个PTC温度传感器的电机, PTC排气温度传感器, 电子保护装置, 防护等级为IP54的接线盒, 充氮气保护, 橡胶减震垫。回油油路组件: 电磁阀, 可更换滤芯的过滤器, 油流量开关, 油视镜, 电子保护模块INT69 B2和电容。

其他附件

以下附件可选：特殊电机, SW的有级无级冷量调节转换组件, 喷液接头, 带截止阀的经济器接头, 直接启动搭接板, 标准的电气附件(电磁阀, INT69 B2电机保护装置)适用于230[V]-1-50/60[Hz]的电源。REFCOMP 保护模块适用于230V /115 [V]-1-50/60[Hz]的电源。但是适用特殊电压电气附件也可以根据需要提供。

ENVELOPE

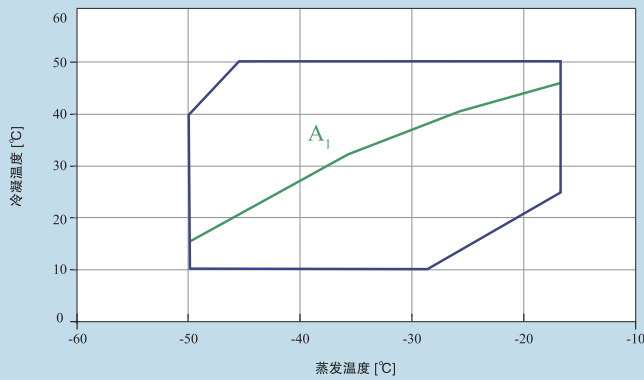
应用范围

10

SW

R404A / R507

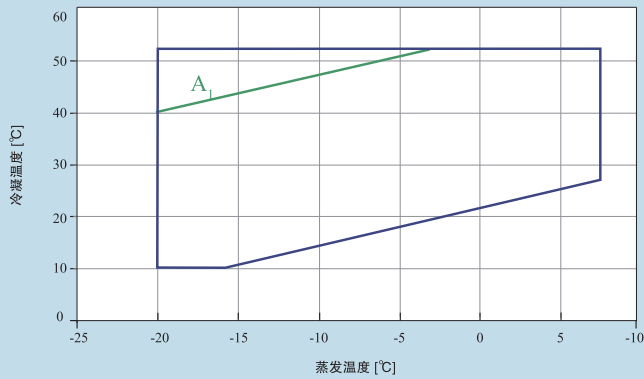
SW3L/SWOL



Limits refer to full load 50 [Hz] operation.
 50[Hz]供电频率下满负荷运行应用范围。
 10 [K] suction gas superheat.
 吸气过热度10[K]。
 110 [°C] max. discharge temperature.
 最高排气温度110[°C]
 A₁ Oil cooling / 油冷

R404A / R507

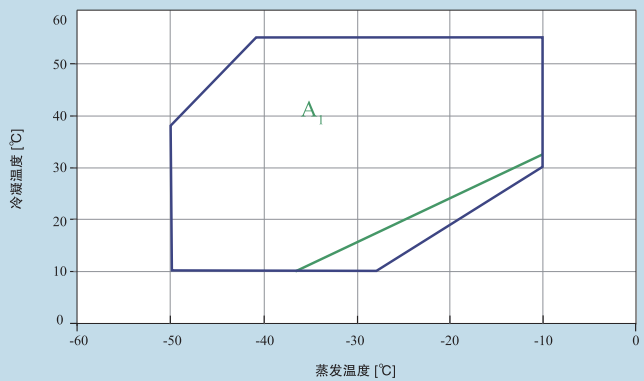
SW1H/SWOH



Limits refer to full load 50 [Hz] operation.
 50[Hz]供电频率下满负荷运行应用范围。
 10 [K] suction gas superheat.
 吸气过热度10[K]。
 110 [°C] max. discharge temperature.
 最高排气温度110[°C]
 A₁ Oil cooling / 油冷

R22

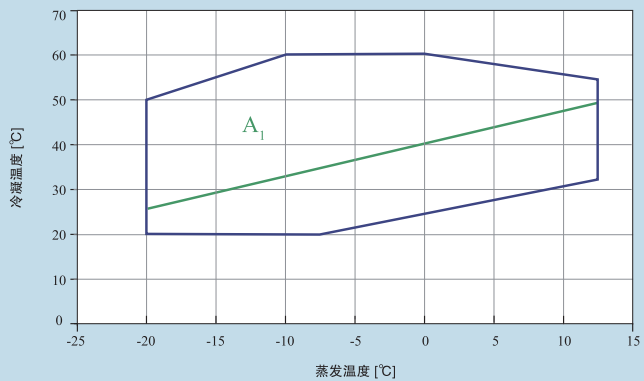
SW3L/SWOL



Limits refer to full load 50 [Hz] operation.
 50[Hz]供电频率下满负荷运行应用范围。
 10 [K] suction gas superheat.
 吸气过热度10[K]。
 110 [°C] max. discharge temperature.
 最高排气温度110[°C]
 A₁ Oil cooling / 油冷

R22

SW1H/SWOH



Limits refer to full load 50 [Hz] operation.
 50[Hz]供电频率下满负荷运行应用范围。
 10 [K] suction gas superheat.
 吸气过热度10[K]。
 110 [°C] max. discharge temperature.
 最高排气温度110[°C]
 A₁ Oil cooling / 油冷

PERFORMANCES

性能参数

SW1H, 制冷剂R22

SW-1-H4000(R22)													
Tc	30			35		40		45		50		60	
Te	Pf	Pa	Pf	Pa	Pf	Pa	Pf	Pa	Pf	Pa	Pf	Pa	
-20	53.4	18.4	50.4	20.6	47	22.9	43.1	25.5	38.8	28.3	—	—	
-15	65.7	18.9	61.9	21	57.7	23.4	53.1	26	48.1	28.9	—	—	
-10	79.9	19.5	75.4	21.6	70.5	23.9	65.3	26.6	59.8	29.5	48	36.2	
-5	96	20.2	90.9	22.2	85.5	24.5	79.8	27.2	73.9	30.1	61.3	37	
0	114.1	21	108.5	22.9	102.6	25.2	96.6	27.8	90.3	30.8	77.3	37.9	
5	134	21.8	128	23.7	121.9	25.9	115.6	28.5	109.1	31.5	—	—	
10	—	—	149.6	24.5	143.2	26.7	136.8	29.3	130.2	32.3	—	—	

SW-1-H5000(R22)													
Tc	30			35		40		45		50		60	
Te	Pf	Pa	Pf	Pa	Pf	Pa	Pf	Pa	Pf	Pa	Pf	Pa	
-20	67.9	23.4	64.1	26.2	59.7	29.2	54.8	32.4	49.3	35.9	—	—	
-15	83.5	24.1	78.7	26.8	73.3	29.8	67.5	33.1	61.1	36.7	—	—	
-10	101.5	24.8	95.8	27.4	89.7	30.4	83	33.8	76	37.5	61	46	
-5	122.1	25.7	115.6	28.2	108.7	31.2	101.5	34.5	93.9	38.3	78	47.1	
0	145	26.6	137.9	29.1	130.5	32	122.8	35.4	114.8	39.2	98.3	48.2	
5	170.3	27.7	162.8	30.1	154.9	32.8	146.9	36.2	138.7	40.1	—	—	
10	—	—	190.2	31.2	182.1	33.9	173.8	37.2	165.5	41	—	—	

SW-1-H6000(R22)													
Tc	30			35		40		45		50		60	
Te	Pf	Pa	Pf	Pa	Pf	Pa	Pf	Pa	Pf	Pa	Pf	Pa	
-20	79.2	27.3	74.8	30.5	69.7	34	63.9	37.8	57.5	41.9	—	—	
-15	97.4	28.1	91.8	31.2	85.8	34.7	78.7	38.6	71.3	42.8	—	—	
-10	118.5	28.9	111.8	32	104.6	35.5	96.9	39.4	88.7	43.7	71.1	53.6	
-5	142.4	29.9	134.9	32.9	126.8	36.4	118.4	40.3	109.6	44.7	91	54.9	
0	169.2	31.1	160.9	33.9	152.2	37.3	143.2	41.3	133.9	45.7	114.6	56.2	
5	198.7	32.4	189.9	35.1	180.8	38.4	171.4	42.3	161.8	46.8	—	—	
10	—	—	221.8	36.4	212.4	39.5	202.8	43.4	193.1	47.9	—	—	

SW-1-H7500(R22)													
Tc	30			35		40		45		50		60	
Te	Pf	Pa	Pf	Pa	Pf	Pa	Pf	Pa	Pf	Pa	Pf	Pa	
-20	92.8	32	87.6	35.8	81.6	39.9	74.9	44.3	67.4	49.1	—	—	
-15	114.1	32.9	107.5	36.6	100.2	40.7	92.2	45.2	83.6	50.1	—	—	
-10	138.8	33.9	131	37.5	122.5	41.6	113.5	46.2	103.9	51.2	83.3	62.8	
-5	166.8	35.1	158	38.6	148.6	42.6	138.7	47.2	128.3	52.4	106.5	64.3	
0	198.1	36.4	188.5	39.8	178.3	43.7	167.8	48.3	156.9	53.5	134.3	65.8	
5	232.8	37.9	222.4	41.1	211.7	45	200.7	49.5	189.5	54.8	—	—	
10	—	—	259.9	42.6	248.8	46.3	237.6	50.8	226.2	56.1	—	—	

SW-1-H9000(R22)													
Tc	30			35		40		45		50		60	
Te	Pf	Pa	Pf	Pa	Pf	Pa	Pf	Pa	Pf	Pa	Pf	Pa	
-20	107.2	37	101.3	41.4	94.4	46.1	86.6	51.2	77.9	56.8	—	—	
-15	131.9	38	124.3	42.3	115.9	47	106.6	52.3	96.6	58	—	—	
-10	160.4	39.2	151.4	43.4	141.7	48.1	131.2	53.4	120.1	59.2	96.3	72.6	
-5	192.9	40.5	182.6	44.6	171.8	49.3	160.3	54.6	148.4	60.5	123.2	74.4	
0	229.1	42.1	217.9	46	206.2	50.6	194	55.9	181.4	61.9	155.3	76.1	
5	269.1	43.8	257.2	47.5	244.8	52	232.1	57.3	219.1	63.3	—	—	
10	—	—	300.5	49.2	287.7	53.6	274.7	58.7	261.5	64.8	—	—	

SW-1-H10500(R22)													
Tc	30			35		40		45		50		60	
Te	Pf	Pa	Pf	Pa	Pf	Pa	Pf	Pa	Pf	Pa	Pf	Pa	
-20	129.4	44.7	122.3	49.9	113.9	55.6	104.5	61.8	94	68.5	—	—	
-15	159.2	45.9	150	51	139.8	56.8	128.6	63.1	116.6	70	—	—	
-10	193.6	47.3	182.7	52.3	170.9	58	158.3	64.4	144.9	71.5	116.2	87.6	
-5	232.7	48.9	220.4	53.8	207.3	59.4	193.5	65.9	179.1	73.1	148.7	89.7	
0	276.5	50.8	262.9	55.5	248.8	61	234.1	67.4	218.9	74.7	187.3	91.7	
5	324.8	52.9	310.3	57.3	295.4	62.7	280.1	69.1	264.4	76.4	—	—	
10	—	—	362.6	59.4	347.2	64.6	331.5	70.9	315.6	78.2	—	—	

SW-1-H11500(R22)													
Tc	30			35		40		45		50		60	
Te	Pf	Pa	Pf	Pa	Pf	Pa	Pf	Pa	Pf	Pa	Pf	Pa	
-20	143.9	49.7	135.9	55.5	126.7	61.8	116.2	68.7	104.5	76.2	—	—	
-15	177	51	166.8	56.7	155.5	63.1	143	70.1	129.6	77.8	—	—	
-10	215.3	52.6	203.2	58.2	190.1	64.5	176	71.6	161.2	79.5	129.2	97.4	
-5	258.8	54.4	245.1	59.8	230.5	66.1	215.1	73.2	199.1	81.2	165.3	99.8	
0	307.4	56.5	292.4	61.7	276.6	67.8	260.3	75	243.4	83.1	208.3	102.1	
5	361.1	58.8	345.1	63.8	328.5	69.8	311.4	76.8	294	85	—	—	
10	—	—	403.1	66.1	386	71.9	368.6	78.8	350.9	87	—	—	

SW-1-H12500(R22)													
Tc	30			35		40		45		50		60	
Te	Pf	Pa	Pf	Pa	Pf	Pa	Pf	Pa	Pf	Pa	Pf	Pa	
-20	154.3	53.3	145.8	59.5	135.8	66.3	124.6	73.7	112.1	81.7	—	—	
-15	189.8	54.7	178.9	60.8	166.7	67.7	153.4	75.2	139	83.4	—	—	
-10	230.9	56.4	217.9	62.4	203.8	69.2	188.8	76.8	172.8	85.2	138.6	104.5	
-5	277.5	58.3	262.8	64.1	247.1	70.9	230.7	78.5	213.5	87.1	177.2	107	
0	329.6	60.5	313.5	66.1	296.6	72.8	279.1	80.4	261	89.1	223.4	109.5	
5	387.2	63.1	370	68.4	352.3	74.8	334	82.4	315.3	91.1	—	—	
10	—	—	432.3	70.8	413.9	77.1	395.2	84.5	376.2	93.2	—	—	

PERFORMANCES

12

SW

SW-1-H14000(R22)																	
Tc	30			35			40			45			50			60	
Te	Pf	Pa	Pf	Pa	Pf	Pa	Pf	Pa	Pf	Pa	Pf	Pa	Pf	Pa	Pf	Pa	
-20	166.7	53.7	154.9	60.7	141.4	68.2	125.2	76.4	105.5	85.5	—	—	—	—	—	—	
-15	206.8	54.7	193.8	61.6	178.9	69.1	161.3	77.6	140	87.3	—	—	—	—	—	—	
-10	249.6	56.2	236.5	62.8	221.4	70.3	203.5	79	181.7	89	123.1	114.4	—	—	—	—	
-5	293.3	58.2	281.3	64.4	267.2	71.7	250.1	80.5	229.1	90.9	171.7	117.7	—	—	—	—	
0	336.3	60.8	326.5	66.5	314.5	73.6	299.5	82.3	280.4	93	226.4	120.9	—	—	—	—	
5	376.7	64.1	370.4	69.1	361.8	75.8	349.9	84.5	333.9	95.2	—	—	—	—	—	—	
10	—	—	411.3	72.4	407.2	78.6	399.7	87	387.9	97.8	—	—	—	—	—	—	

SW-1-H16000(R22)																	
Tc	30			35			40			45			50			60	
Te	Pf	Pa	Pf	Pa	Pf	Pa	Pf	Pa	Pf	Pa	Pf	Pa	Pf	Pa	Pf	Pa	
-20	184.5	61.2	172.2	69.1	156.5	77.8	137.9	87.3	116.8	97.5	—	—	—	—	—	—	
-15	228.9	62.4	215.3	70	198.1	78.9	177.8	88.7	154.9	99.5	—	—	—	—	—	—	
-10	276.3	64.1	262.5	71.4	245.1	80.2	224.5	90.2	201.2	101.5	148.2	127.3	—	—	—	—	
-5	324.7	66.4	312.1	73.2	295.8	81.8	276.1	92	253.6	103.7	201.9	131.1	—	—	—	—	
0	372.2	69.4	362.2	75.6	348.2	83.9	330.8	94.1	310.4	106	262.5	134.8	—	—	—	—	
5	417	73.1	410.8	78.7	400.5	86.5	386.6	96.5	369.6	108.6	—	—	—	—	—	—	
10	—	—	456.1	82.4	450.7	89.7	441.7	99.4	429.4	111.5	—	—	—	—	—	—	

SW-1-H19000(R22)																	
Tc	30			35			40			45			50			60	
Te	Pf	Pa	Pf	Pa	Pf	Pa	Pf	Pa	Pf	Pa	Pf	Pa	Pf	Pa	Pf	Pa	
-20	211.5	70.1	197	79.6	179.4	89.2	158.3	99.7	133.8	111.8	—	—	—	—	—	—	
-15	262.4	71.5	246.4	80.7	227	90.4	204.1	101.2	177.6	114	—	—	—	—	—	—	
-10	316.6	73.5	300.5	82.3	280.9	91.9	257.6	103	230.6	116.4	164.6	153.1	—	—	—	—	
-5	372.1	76.1	357.4	84.4	339	93.8	316.8	105	290.7	118.8	226.1	157.4	—	—	—	—	
0	426.6	79.5	414.7	87.1	399.1	96.2	379.4	107.4	355.8	121.5	295.6	161.7	—	—	—	—	
5	478	83.8	470.4	90.6	459	99.1	443.4	110.2	423.6	124.5	—	—	—	—	—	—	
10	—	—	522.4	94.9	516.6	102.8	506.6	113.5	492.2	127.8	—	—	—	—	—	—	

SW-1-H21000(R22)																	
Tc	30			35			40			45			50			60	
Te	Pf	Pa	Pf	Pa	Pf	Pa	Pf	Pa	Pf	Pa	Pf	Pa	Pf	Pa	Pf	Pa	
-20	233	76.5	216.7	86.3	197.6	97.3	174.9	109.2	147.5	121.9	—	—	—	—	—	—	
-15	289.1	78	271	87.5	250.1	98.6	225.4	111	195.7	124.4	—	—	—	—	—	—	
-10	348.9	80.1	330.7	89.2	309.5	100.2	284.4	112.9	254.1	127	174	158.7	—	—	—	—	
-5	410	83	393.3	91.5	373.5	102.3	349.6	115.1	320.3	129.6	241.8	163.4	—	—	—	—	
0	470.1	86.7	456.5	94.5	439.7	104.9	418.6	117.6	392	132.5	318.4	168	—	—	—	—	
5	526.7	91.4	518	98.3	505.8	108.1	489.1	120.7	466.8	135.8	—	—	—	—	—	—	
10	—	—	575.2	103	569.3	112.1	558.7	124.3	542.3	139.4	—	—	—	—	—	—	

SW-1-H24000(R22)																	
Tc	30			35			40			45			50			60	
Te	Pf	Pa	Pf	Pa	Pf	Pa	Pf	Pa	Pf	Pa	Pf	Pa	Pf	Pa	Pf	Pa	
-20	243.9	82.5	227.8	92.9	206.9	104.9	182.1	118	154.4	131.5	—	—	—	—	—	—	
-15	302.6	84.1	284.7	94.2	261.8	106.3	234.9	119.9	204.8	134.2	—	—	—	—	—	—	
-10	365.2	86.4	347.2	96	324	108.1	296.6	121.9	265.9	136.9	198.6	167.7	—	—	—	—	
-5	429.2	89.5	412.7	98.5	391	110.3	364.8	124.3	335.3	139.8	269.6	172.7	—	—	—	—	
0	492	93.5	478.9	101.7	460.3	113.1	437.1	127.1	410.3	142.9	349.7	177.7	—	—	—	—	
5	551.3	98.6	543.2	105.8	529.4	116.6	510.9	130.4	488.6	146.4	—	—	—	—	—	—	
10	—	—	603.1	110.8	595.8	120.9	583.7	134.3	567.7	150.4	—	—	—	—	—	—	

SW-1-H25000(R22)																	
Tc	30			35			40			45			50			60	
Te	Pf	Pa	Pf	Pa	Pf	Pa	Pf	Pa	Pf	Pa	Pf	Pa	Pf	Pa	Pf	Pa	
-20	290.3	96.3	270.7	109.1	246.2	122.4	217	136.9	183.7	153.4	—	—	—	—	—	—	
-15	360.1	98.1	338.4	110.6	311.5	124	279.8	139.1	243.7	156.5	—	—	—	—	—	—	
-10	434.6	100.8	412.8	112.8	385.6	126.1	353.3	141.5	316.5	159.7	230.5	207.8	—	—	—	—	
-5	510.7	104.4	490.8	115.7	465.3	128.7	434.5	144.3	399	163.1	314.9	213.7	—	—	—	—	
0	585.5	109.1	569.5	119.4	547.7	132	520.5	147.5	488.3	166.8	410.3	219.5	—	—	—	—	
5	656	115	646	124.2	630	136.1	608.3	151.4	581.5	170.8	—	—	—	—	—	—	
10	—	—	717.3	130	709	141.1	695	155.9	675.5	175.4	—	—	—	—	—	—	

KEY / 图例

Pf = Cooling Capacity / 冷量 (kW)

Pa = Input Power / 输入电功率 (kW)


Te = Evaporating temperature / 蒸发温度 (°C)


Tc = Condensing temperature / 冷凝温度 (°C)

50 Hz frequency / 频率

Liquid subcooling / 液体过冷度 5K

Suction gas superheat / 吸气过热度 10K

 Working conditions which need not oil cooling
此工况范围内不需要油冷却

 Working conditions which require the additional cooling (see application limits)
此工况范围内需要油冷却(具体参看“应用范围”章节)

PERFORMANCES

性能参数

SW3L, (可带经济器), 制冷剂R22

SW-3-L3000(R22)												
Tc	20		30		40		45		50		55	
Te	Pf	Pa	Pf	Pa	Pf	Pa	Pf	Pa	Pf	Pa	Pf	Pa
-50	12.6	12	11	14.8	—	—	—	—	—	—	—	—
-40	22.5	13.4	20.2	16.1	17.5	19.4	16	21.3	14.4	23.5	12.6	25.8
-35	28.9	14.2	26.1	16.9	22.9	20.2	21.1	22.1	19.2	24.2	17.2	26.5
-30	36.6	15.1	33.2	17.8	29.3	21	27.2	22.9	25	24.9	22.6	27.3
-25	45.6	16.3	41.5	18.9	37	22	34.5	23.8	31.8	25.8	29.1	28.1
-20	56.1	17.7	51.3	20.1	45.9	23.1	43	24.9	39.9	26.9	36.7	29.1
-10	—	—	—	—	—	—	—	—	—	—	56.3	31.8

SW-3-L3000(R22) with ECO / 带经济器												
Tc	20		30		40		45		50		55	
Te	Pf	Pa	Pf	Pa	Pf	Pa	Pf	Pa	Pf	Pa	Pf	Pa
-50	16.4	13.8	15.2	17.9	—	—	—	—	—	—	—	—
-40	27.6	14.5	26.4	18.4	24.5	23.5	23.3	26.6	21.9	30.3	20.1	34.6
-35	34.6	15	33.2	18.8	31.2	23.7	29.8	26.7	28.3	30.3	26.4	34.4
-30	42.6	15.6	41	19.3	38.8	24.1	37.3	27	35.6	30.4	33.6	34.3
-25	51.7	16.4	49.9	20	47.4	24.5	45.8	27.4	43.9	30.6	41.8	34.4
-20	62	17.3	60	20.8	57.2	25.2	55.5	27.9	53.5	31.1	51.1	34.7
-10	—	—	—	—	—	—	—	—	—	—	73.6	35.9

SW-3-L4000(R22)												
Tc	20		30		40		45		50		55	
Te	Pf	Pa	Pf	Pa	Pf	Pa	Pf	Pa	Pf	Pa	Pf	Pa
-50	15.8	16	13.8	19.7	—	—	—	—	—	—	—	—
-40	28.3	17.2	25.3	21	21.9	25.3	20	27.6	17.9	30.1	15.5	32.8
-35	36.4	18.1	32.8	21.8	28.7	26.1	26.5	28.5	24	31.1	21.3	33.9
-30	46.1	19.2	41.7	22.8	36.9	27	34.2	29.5	31.3	32.1	28.2	35
-25	57.5	20.5	52.2	23.9	46.5	28.1	43.4	30.6	40.1	33.2	36.5	36.1
-20	70.9	22.2	64.6	25.3	57.8	29.4	54.2	31.8	50.4	34.4	46.3	37.4
-10	—	—	—	—	—	—	—	—	—	—	71.4	40.3

SW-3-L4000(R22) with ECO / 带经济器												
Tc	20		30		40		45		50		55	
Te	Pf	Pa	Pf	Pa	Pf	Pa	Pf	Pa	Pf	Pa	Pf	Pa
-50	20.2	18	18.9	23.2	—	—	—	—	—	—	—	—
-40	34.2	18.3	32.6	23.4	30.2	29.7	28.6	33.4	26.6	37.7	24.2	42.6
-35	42.9	18.7	41	23.6	38.3	29.9	36.6	33.6	34.6	37.8	32	42.6
-30	52.8	19.3	50.6	24.1	47.7	30.1	45.9	33.8	43.7	37.9	41	42.6
-25	64.1	20.1	61.7	24.6	58.5	30.5	56.4	34.1	54.1	38.1	51.3	42.8
-20	76.9	21.2	74.2	25.4	70.6	31.1	68.4	34.5	65.9	38.5	63	43
-10	—	—	—	—	—	—	—	—	—	—	91	43.9

SW-3-L5000(R22)												
Tc	20		30		40		45		50		55	
Te	Pf	Pa	Pf	Pa	Pf	Pa	Pf	Pa	Pf	Pa	Pf	Pa
-50	18.5	18.2	16.1	22.4	—	—	—	—	—	—	—	—
-40	33	19.6	29.5	23.9	25.6	28.7	23.3	31.4	20.8	34.2	18.1	37.3
-35	42.5	20.6	38.3	24.8	33.5	29.7	30.9	32.4	28	35.3	24.9	38.5
-30	53.8	21.8	48.6	25.9	43	30.7	39.9	33.5	36.6	36.5	32.9	39.8
-25	67.1	23.3	60.9	27.2	54.2	32	50.6	34.7	46.7	37.8	42.6	41.1
-20	82.7	25.2	75.3	28.8	67.5	33.4	63.2	36.2	58.8	39.2	54.1	42.5
-10	—	—	—	—	—	—	—	—	—	—	83.3	45.8

SW-3-L5000(R22) with ECO / 带经济器												
Tc	20		30		40		45		50		55	
Te	Pf	Pa	Pf	Pa	Pf	Pa	Pf	Pa	Pf	Pa	Pf	Pa
-50	23.4	20.1	21.8	26	—	—	—	—	—	—	—	—
-40	39.5	20.5	37.5	26.2	34.7	33.1	32.9	37.3	30.6	42	27.8	47.4
-35	49.5	21	47.2	26.4	44.1	33.3	42.1	37.4	39.7	42.1	36.8	47.4
-30	60.9	21.6	58.3	26.9	54.9	33.6	52.7	37.6	50.2	42.2	47.1	47.4
-25	73.9	22.6	71	27.6	67.2	34.1	64.9	38	62.1	42.5	58.9	47.6
-20	88.6	23.8	85.4	28.5	81.2	34.7	78.7	38.5	75.7	42.9	72.3	47.8
-10	—	—	—	—	—	—	—	—	—	—	104	48.8

SW-3-L6000(R22)												
Tc	20		30		40		45		50		55	
Te	Pf	Pa	Pf	Pa	Pf	Pa	Pf	Pa	Pf	Pa	Pf	Pa
-50	22.2	21	19.4	25.8	—	—	—	—	—	—	—	—
-40	39.3	23.2	35.3	28	30.7	33.7	28.1	37	25.4	40.7	22.4	44.9
-35	50.5	24.5	45.6	29.2	40.1	34.9	37.1	38.2	33.8	41.9	30.3	46.1
-30	63.8	26.2	57.9	30.8	51.3	36.3	47.7	39.6	43.9	43.2	39.7	47.4
-25	79.5	28.3	72.4	32.6	64.6	38	60.3	41.2	55.8	44.8	51	48.8
-20	97.9	30.8	89.5	34.9	80.2	40	75.2	43.1	69.9	46.6	64.3	50.6
-10	—	—	—	—	—	—	—	—	—	—	98.4	55.1

SW-3-L6000(R22) with ECO / 带经济器												
Tc	20		30		40		45		50		55	
Te	Pf	Pa	Pf	Pa	Pf	Pa	Pf	Pa	Pf	Pa	Pf	Pa
-50	28.2	23.4	26.1	30	—	—	—	—	—	—	—	—
-40	47.4	24.6	45	31	41.7	39.1	39.5	44	37	49.7	34	56.4
-35	59.5	25.5	56.7	31.7	52.9	39.6	50.5	44.4	47.7	49.9	44.5	56.3
-30	73.3	26.6	70.2	32.7	65.9	40.3	63.2	44.9	60.1	50.3	56.5	56.5
-25	89.2	28.1	85.6	33.9	80.8	41.2	77.8	45.7	74.4	50.9	70.4	57
-20	107	29.9	103	35.4	97.8	42.5	94.4	46.8	90.6	51.9	86.2	57.7
-10	—	—	—	—	—	—	—	—	—	—	125	60.1

PERFORMANCES

性能参数

14

SW

SW-3-L7000(R22)													
Tc	20		30		40		45		50		55		
Te	Pf	Pa	Pf	Pa	Pf	Pa	Pf	Pa	Pf	Pa	Pf	Pa	
-50	25.6	23.5	22.4	29	—	—	—	—	—	—	—	—	—
-40	45.4	26	40.8	31.4	35.5	37.8	32.5	41.6	29.3	45.7	25.9	50.4	
-35	58.3	27.6	52.7	32.9	46.4	39.2	42.9	42.9	39.1	47.1	35	51.8	
-30	73.7	29.5	67	34.6	59.4	40.8	55.2	44.4	50.7	48.6	45.9	53.2	
-25	91.9	31.8	83.8	36.7	74.7	42.7	69.8	46.2	64.5	50.3	59	54.9	
-20	113.2	34.6	103.5	39.2	92.8	44.9	87	48.4	80.8	52.3	74.4	56.8	
-10	—	—	—	—	—	—	—	—	—	—	113.8	61.9	

SW-3-L7000(R22) with ECO / 带经济器													
Tc	20		30		40		45		50		55		
Te	Pf	Pa	Pf	Pa	Pf	Pa	Pf	Pa	Pf	Pa	Pf	Pa	
-50	32.2	25.9	29.9	33.2	—	—	—	—	—	—	—	—	—
-40	54.2	27.2	51.4	34.2	47.5	43.1	45.1	48.5	42.2	54.7	38.8	62.1	
-35	67.9	28.2	64.7	35	60.4	43.6	57.6	48.9	54.4	54.9	50.6	62	
-30	83.7	29.4	80.1	36	75.1	44.4	72	49.5	68.5	55.4	64.3	62.2	
-25	101.7	31	97.6	37.3	92	45.4	88.6	50.3	84.6	56	80.1	62.6	
-20	122.2	33	117.5	39	111.3	46.7	107.4	51.5	103.1	57	98	63.4	
-10	—	—	—	—	—	—	—	—	—	—	14.15	65.9	

SW-3-L8000(R22)													
Tc	20		30		40		45		50		55		
Te	Pf	Pa	Pf	Pa	Pf	Pa	Pf	Pa	Pf	Pa	Pf	Pa	
-50	30.9	28	27	34.5	—	—	—	—	—	—	—	—	—
-40	54.8	31	49.2	37.4	42.8	45	39.3	49.5	35.4	54.5	31.2	60	
-35	70.4	32.8	63.6	39.1	56	46.7	51.7	51.1	47.2	56.1	42.2	61.6	
-30	89	35.1	80.8	41.2	71.6	48.6	66.6	52.9	61.2	57.8	55.4	63.4	
-25	110.9	37.8	101.1	43.6	90.1	50.8	84.2	55.1	77.9	59.9	71.1	65.3	
-20	136.6	41.2	124.9	46.6	111.9	53.5	104.9	57.6	97.6	62.3	89.8	67.7	
-10	—	—	—	—	—	—	—	—	—	—	137.3	73.7	

SW-3-L8000(R22) with ECO / 带经济器													
Tc	20		30		40		45		50		55		
Te	Pf	Pa	Pf	Pa	Pf	Pa	Pf	Pa	Pf	Pa	Pf	Pa	
-50	39.1	31	36.4	40	—	—	—	—	—	—	—	—	—
-40	65.6	32.5	62.5	41.1	58.1	51.9	55.2	58.6	51.7	66.5	47.7	75.8	
-35	82.1	33.6	78.6	41.9	73.6	52.5	70.4	59	66.7	66.5	62.3	75.4	
-30	101.1	35	97.1	43	91.5	53.2	88	59.5	83.8	66.8	79	75.4	
-25	122.7	36.8	118.1	44.4	111.9	54.3	108	60.4	103.4	67.4	98.1	75.7	
-20	147.1	39.1	142	46.3	135	55.7	130.7	61.6	125.7	68.4	119.9	76.3	
-10	—	—	—	—	—	—	—	—	—	—	172.3	78.9	

SW-3-L9500(R22)													
Tc	20		30		40		45		50		55		
Te	Pf	Pa	Pf	Pa	Pf	Pa	Pf	Pa	Pf	Pa	Pf	Pa	
-50	34.4	31.4	30	38.6	—	—	—	—	—	—	—	—	—
-40	60.9	34.7	54.7	41.8	47.6	50.4	43.6	55.3	39.3	60.9	34.7	67.1	
-35	78.3	36.7	70.8	43.8	62.2	52.2	57.5	57.2	52.4	62.7	47	68.9	
-30	98.9	39.3	89.8	46.1	79.6	54.3	74	59.2	68	64.7	61.6	70.9	
-25	123.3	42.3	112.4	48.8	100.2	56.8	93.6	61.6	86.6	67	79.1	73.1	
-20	151.9	46.1	138.8	52.2	124.5	59.8	116.7	64.4	108.5	69.7	99.8	75.7	
-10	—	—	—	—	—	—	—	—	—	—	152.6	82.5	

SW-3-L9500(R22) with ECO / 带经济器													
Tc	20		30		40		45		50		55		
Te	Pf	Pa	Pf	Pa	Pf	Pa	Pf	Pa	Pf	Pa	Pf	Pa	
-50	43.1	34.2	40.1	44.1	—	—	—	—	—	—	—	—	—
-40	72.1	35.8	68.7	45.2	68.8	57.1	60.6	64.5	56.9	73.1	52.4	83.3	
-35	90.2	36.9	86.3	46	80.9	57.6	77.4	64.8	73.2	73.1	68.4	82.8	
-30	110.9	38.5	106.5	47.2	100.4	58.4	88.5	65.3	92	73.3	86.6	82.7	
-25	134.5	40.5	129.5	48.8	122.6	59.5	118.3	66.2	113.3	73.9	107.5	82.9	
-20	161.1	43.1	155.4	50.8	147.8	61.1	143.1	67.4	137.6	74.9	131.3	83.5	
-10	—	—	—	—	—	—	—	—	—	—	188.2	86.2	

SW-3-L10500(R22)													
Tc	20		30		40		45		50		55		
Te	Pf	Pa	Pf	Pa	Pf	Pa	Pf	Pa	Pf	Pa	Pf	Pa	
-50	36.9	33.6	32.2	41.3	—	—	—	—	—	—	—	—	—
-40	65.3	37.1	58.7	44.8	51.1	53.9	46.8	59.3	42.2	65.2	37.2	71.9	
-35	83.9	39.3	75.9	46.9	66.7	55.9	61.7	61.2	56.2	67.1	50.4	73.8	
-30	106.1	42	96.3	49.3	85.4	58.2	79.4	63.4	73	69.3	66.1	75.9	
-25	132.2	45.3	120.5	52.3	107.5	60.8	100.4	65.9	92.8	71.7	84.8	78.2	
-20	162.9	49.3	148.9	55.8	133.5	64	125.1	69	116.3	74.6	107	81	
-10	—	—	—	—	—	—	—	—	—	—	163.7	88.3	

SW-3-L10500(R22) with ECO / 带经济器													
Tc	20		30		40		45		50		55		
Te	Pf	Pa	Pf	Pa	Pf	Pa	Pf	Pa	Pf	Pa	Pf	Pa	
-50	45.9	36.3	42.7	46.7	—	—	—	—	—	—	—	—	—
-40	76.7	37.9	73.1	47.8	67.9	60.5	64.5	68.3	60.5	77.4	55.7	88.2	
-35	95.9	39.1	91.8	48.7	86	61	82.3	68.5	77.9	77.3	72.7	87.6	
-30	117.8	40.8	113.2	49.9	106.7	61.8	102.6	69.1	97.7	77.5	92.1	87.5	
-25	142.8	42.9	137.5	51.6	130.2	62.9	125.7	69.9	120.4	78.1	114.2	87.6	
-20	171	45.7	165	53.8	156.9	64.6	151.8	71.3	146	79.1	139.3	88.2	
-10	—	—	—	—	—	—	—	—	—	—	199.4	90.9	

PERFORMANCES

性能参数

SW-3-L11500(R22)																		
Tc	20			30			40			45			50			55		
Te	Pf	Pa	Pf	Pa	Pf	Pa	Pf	Pa	Pf	Pa	Pf	Pa	Pf	Pa	Pf	Pa		
-50	38.7	37.5	34	46.1	—	—	—	—	—	—	—	—	—	—	—	—		
-40	67.6	41.4	61.2	50.5	53.7	60.5	49.6	66.1	45.1	72.2	40.3	79.1	—	—	—	—		
-35	86.7	43.6	78.8	52.7	70	63	65.1	68.9	59.9	75.3	54.3	82.4	—	—	—	—		
-30	109.4	46	99.9	55.2	89.3	65.7	83.6	71.7	77.5	78.4	70.9	85.8	—	—	—	—		
-25	136.2	48.8	124.8	58	112.2	68.6	105.4	74.7	98.3	81.6	90.7	89.2	—	—	—	—		
-20	167.6	52.2	154	61.2	139.1	71.9	131.2	78.1	122.8	85.1	114	92.9	—	—	—	—		
-10	—	—	—	—	—	—	—	—	—	—	173.3	101.6	—	—	—	—		

SW-3-L11500(R22) with ECO / 带经济器																		
Tc	20			30			40			45			50			55		
Te	Pf	Pa	Pf	Pa	Pf	Pa	Pf	Pa	Pf	Pa	Pf	Pa	Pf	Pa	Pf	Pa		
-50	50.1	42.7	47.2	55.4	—	—	—	—	—	—	—	—	—	—	—	—		
-40	82.7	44.5	79.9	57.3	75.5	72.9	72.5	82.5	68.9	93.5	64.5	106.6	—	—	—	—		
-35	103	45.4	99.9	58.1	95.3	73.8	92.2	83.3	88.4	94.4	83.9	107.4	—	—	—	—		
-30	126.3	46.6	122.9	59.1	117.8	74.6	114.5	84.2	110.6	95.2	105.8	108.1	—	—	—	—		
-25	152.9	48.2	149	60.3	143.5	75.7	139.9	85.1	135.7	96.1	130.7	109	—	—	—	—		
-20	182.9	50.2	178.5	61.9	172.4	77	168.6	86.4	164.1	97.2	158.8	109.9	—	—	—	—		
-10	—	—	—	—	—	—	—	—	—	—	—	—	225.6	112.9	—	—		

SW-3-L13000(R22)																		
Tc	20			30			40			45			50			55		
Te	Pf	Pa	Pf	Pa	Pf	Pa	Pf	Pa	Pf	Pa	Pf	Pa	Pf	Pa	Pf	Pa		
-50	45.8	41.6	40.3	51	—	—	—	—	—	—	—	—	—	—	—	—		
-40	80	45.9	72.4	55.9	63.6	66.9	58.7	73.1	53.4	80	47.7	87.5	—	—	—	—		
-35	102.5	48.2	93.3	58.4	82.8	69.8	77.1	76.2	70.9	83.3	64.2	91.3	—	—	—	—		
-30	129.4	50.9	118.2	61.1	105.7	72.7	98.9	79.4	91.6	86.7	83.9	95	—	—	—	—		
-25	161.1	54	147.6	64.2	132.8	75.9	124.7	82.7	116.3	90.3	107.3	98.8	—	—	—	—		
-20	198.4	57.8	182.2	67.8	164.6	79.6	155.2	86.4	145.3	94.2	134.9	102.9	—	—	—	—		
-10	—	—	—	—	—	—	—	—	—	—	205	112.5	—	—	—	—		

SW-3-L13000(R22) with ECO / 带经济器																		
Tc	20			30			40			45			50			55		
Te	Pf	Pa	Pf	Pa	Pf	Pa	Pf	Pa	Pf	Pa	Pf	Pa	Pf	Pa	Pf	Pa		
-50	59	47	55.5	60.8	—	—	—	—	—	—	—	—	—	—	—	—		
-40	97.3	48.9	93.9	62.9	88.6	79.9	85.1	90.2	80.8	102.1	75.6	116.2	—	—	—	—		
-35	121.2	50	117.5	63.8	111.8	80.8	108.1	91.1	103.6	103.1	98.2	117.1	—	—	—	—		
-30	148.7	51.3	144.5	64.9	138.4	81.8	134.4	92.1	129.6	104.1	123.9	118	—	—	—	—		
-25	180	53	175.2	66.3	168.5	83	164.2	93.3	159.1	105.1	153.1	119	—	—	—	—		
-20	215.3	55.3	209.9	68.1	202.5	84.5	197.9	94.7	192.4	106.4	186.1	120.2	—	—	—	—		
-10	—	—	—	—	—	—	—	—	—	—	—	—	264.4	123.6	—	—		

SW-3-L16000(R22)																		
Tc	20			30			40			45			50			55		
Te	Pf	Pa	Pf	Pa	Pf	Pa	Pf	Pa	Pf	Pa	Pf	Pa	Pf	Pa	Pf	Pa		
-50	53	47.6	46.6	58.5	—	—	—	—	—	—	—	—	—	—	—	—		
-40	92.6	52.6	83.8	64.1	73.6	76.7	67.9	83.8	61.8	91.6	55.2	100.3	—	—	—	—		
-35	118.7	55.3	108	66.9	95.9	80	89.2	87.3	82.1	95.5	74.4	104.6	—	—	—	—		
-30	149.8	58.3	136.8	70	122.4	83.3	114.5	90.9	106.1	99.4	97.2	108.8	—	—	—	—		
-25	186.6	61.9	170.9	73.5	153.7	87	144.4	94.8	134.6	103.5	124.2	113.2	—	—	—	—		
-20	229.6	66.3	210.9	77.7	190.6	91.2	179.7	99.1	168.2	107.9	156.2	117.9	—	—	—	—		
-10	—	—	—	—	—	—	—	—	—	—	237.4	128.9	—	—	—	—		

SW-3-L16000(R22) with ECO / 带经济器																		
Tc	20			30			40			45			50			55		
Te	Pf	Pa	Pf	Pa	Pf	Pa	Pf	Pa	Pf	Pa	Pf	Pa	Pf	Pa	Pf	Pa		
-50	67.9	53.3	64.1	69.2	—	—	—	—	—	—	—	—	—	—	—	—		
-40	111.7	55.2	108.1	71.1	102.4	90.7	98.5	102.7	93.7	116.7	87.8	133.4	—	—	—	—		
-35	138.8	56.2	134.9	71.9	129	91.5	125	103.5	120	117.5	114	134	—	—	—	—		
-30	169.8	57.6	165.6	73	159.2	92.3	154.9	104.2	149.8	118.1	143.6	134.5	—	—	—	—		
-25	205	59.9	200.3	74.4	193.4	93.4	188.8	105.1	183.4	118.9	177	135	—	—	—	—		
-20	244.5	62	239.2	76.3	231.7	94.8	226.9	106.4	221.2	119.9	214.5	135.8	—	—	—	—		
-10	—	—	—	—	—	—	—	—	—	—	—	—	302.8	138.5	—	—		

SW-3-L18000(R22)																		
Tc	20			30			40			45			50			55		
Te	Pf	Pa	Pf	Pa	Pf	Pa	Pf	Pa	Pf	Pa	Pf	Pa	Pf	Pa	Pf	Pa		
-50	57.6	52.8	50.7	64.8	—	—	—	—	—	—	—	—	—	—	—	—		
-40	100.7	58.3	91	71.1	80	85.1	73.8	93	67.2	101.6	60	111.2	—	—	—	—		
-35	129	61.3	117.4	74.2	104.2	88.7	96.9	96.9	89.2	105.9	80.8	116	—	—	—	—		
-30	162.8	64.7	148.7	77.7	133	92.4	124.4	100.9	115.3	110.3	105.6	120.7	—	—	—	—		
-25	202.7	68.7	185.7	81.6	167	96.5	156.9	105.1	146.3	114.8	135	125.6	—	—	—	—		
-20	249.6	73.5	229.2	86.1	207.1	101.1	195.2	109.9	182.8	119.7	169.7	130.8	—	—	—	—		
-10	—	—	—	—	—	—	—	—	—	—	257.9	143	—	—	—	—		

SW-3-L18000(R22) with ECO / 带经济器																		
Tc	20			30			40			45			50			55		
Te	Pf	Pa	Pf	Pa	Pf	Pa	Pf	Pa	Pf	Pa	Pf	Pa	Pf	Pa	Pf	Pa		
-50	72.9	58.3	68.6	75.3	—	—	—	—	—	—	—	—	—	—	—	—		
-40	120.1	60.5	115.7	77.6	109.2	98.3	104.8	110.9	99.5	125.5	93	142.7	—	—	—	—		
-35	149.4	61.8	144.6	78.6	137.7	99.4	133	112	127.4	126.6	120.8	143.6	—	—	—	—		
-30	183	63.4	177.7	79.9	170.1	100.5	165.1	113.1	159.2	127.6	152.1	144.5	—	—	—	—		
-25	221.1	65.6	215.2	81.6	206.8	101.9	201.5	114.3	195.1	128.7	187.7	145.5	—	—	—	—		
-20	264.1	68.5	257.4	83.9	248.2	103.7	242.4	116	235.6	130.2	227.7	146.8	—	—	—	—		
-10	—	—	—	—	—	—	—	—	—	—	—	—	322.5	150.7	—	—		

PERFORMANCES

性能参数

16

SW

SW-3-L20000(R22)													
Tc	20		30		40		45		50		55		
Te	Pf	Pa	Pf	Pa	Pf	Pa	Pf	Pa	Pf	Pa	Pf	Pa	
-50	63	57.2	55.4	70.2	—	—	—	—	—	—	—	—	
-40	110.1	63.1	99.6	77	87.5	92.1	80.8	100.7	73.5	110	65.6	120.5	
-35	141.1	66.4	128.4	80.4	114	96	106	104.9	97.5	114.7	88.4	125.6	
-30	178.1	70	162.6	84.1	145.5	100.1	136.1	109.2	126.1	119.4	115.5	130.7	
-25	221.8	74.4	203.2	88.3	182.7	104.5	171.7	113.8	160	124.3	147.7	136	
-20	273	79.6	250.7	93.3	226.5	109.5	213.6	119	200	129.6	185.7	141.6	
-10	—	—	—	—	—	—	—	—	—	—	282.2	154.8	

SW-3-L20000(R22) with ECO / 带经济器													
Tc	20		30		40		45		50		55		
Te	Pf	Pa	Pf	Pa	Pf	Pa	Pf	Pa	Pf	Pa	Pf	Pa	
-50	79	62.3	74.4	80.4	—	—	—	—	—	—	—	—	
-40	130	64.6	125.3	82.7	118.2	104.8	113.4	118.1	107.7	133.6	100.7	151.9	
-35	161.6	66	156.5	83.9	148.9	105.9	143.9	119.2	137.8	134.7	130.6	152.8	
-30	197.8	67.1	192	85.2	183.8	107	178.4	120.3	172	135.7	164.4	153.7	
-25	238.8	70.1	232.4	87	223.3	108.5	217.5	121.6	210.6	136.8	202.6	154.6	
-20	284.9	73.3	277.6	89.5	267.7	110.4	261.4	123.3	254.1	138.3	245.6	155.8	
-10	—	—	—	—	—	—	—	—	—	—	347	159.9	

SW-3-L22000(R22)													
Tc	20		30		40		45		50		55		
Te	Pf	Pa	Pf	Pa	Pf	Pa	Pf	Pa	Pf	Pa	Pf	Pa	
-50	71.7	64.5	63.1	79.2	—	—	—	—	—	—	—	—	
-40	125.4	71.2	113.4	86.8	99.7	103.9	92	113.5	83.7	124.1	74.7	135.8	
-35	160.7	74.8	146.2	90.6	129.8	108.3	120.8	118.3	111.1	129.3	100.7	141.6	
-30	202.8	79	185.3	94.8	165.7	112.8	155	123.1	143.7	134.6	131.6	147.4	
-25	252.6	83.9	231.4	99.6	208.1	117.8	195.5	128.4	182.3	140.1	168.2	153.3	
-20	310.9	89.7	285.6	105.2	258	123.5	243.3	134.2	227.8	146.1	211.5	159.6	
-10	—	—	—	—	—	—	—	—	—	—	321.4	174.5	

SW-3-L22000(R22) with ECO / 带经济器													
Tc	20		30		40		45		50		55		
Te	Pf	Pa	Pf	Pa	Pf	Pa	Pf	Pa	Pf	Pa	Pf	Pa	
-50	89.6	69.9	84.2	90	—	—	—	—	—	—	—	—	
-40	147.4	72.5	141.9	92.7	133.8	117.2	128.3	132	121.7	149.2	113.7	169.3	
-35	183.3	74.1	177.3	94	168.5	118.5	162.7	133.3	155.8	150.4	147.5	170.4	
-30	224.4	76.1	217.7	95.6	208	119.9	201.8	134.6	194.4	151.6	185.6	171.5	
-25	271	78.8	263.4	97.7	252.8	121.6	246.1	136.1	238.1	153	228.8	172.7	
-20	323.4	82.5	314.9	100.6	303.2	123.8	295.9	138.1	287.4	154.8	277.5	174.2	
-10	—	—	—	—	—	—	—	—	—	—	392.4	179	

KEY / 图例

Pf = Cooling Capacity / 冷量 (kW)

Pa = Input Power / 输入电功率 (kW)

Te = Evaporating temperature / 蒸发温度 (°C)

Tc = Condensing temperature / 冷凝温度 (°C)

50 Hz frequency / 频率

Liquid subcooling / 液体过冷度 5K

Suction gas superheat / 吸气过热度 10K



Working conditions which need not oil cooling
此工况范围内不需要油冷却



Working conditions which require the additional cooling (see application limits)
此工况范围内需要油冷却(具体参看“应用范围”章节)

PERFORMANCES

性能参数

SW1H, 制冷剂R404A / R507

SW-1-H4000(R404A)																		
Tc	20			30			35			40			45			50		
Te	Pf	Pa	Pf	Pa	Pf	Pa	Pf	Pa	Pf	Pa	Pf	Pa	Pf	Pa	Pf	Pa	Pf	Pa
-20	63.9	16.7	57.3	22.5	52.6	24.9	47	26.8	40.5	28.5	33.2	29.8						
-15	79.2	17.3	70.3	23	64.5	25.5	57.9	27.7	50.6	29.7	42.5	31.5						
-10	96.9	17.2	85.6	23	78.8	25.7	71.2	28.2	63	30.6	54.2	33						
-5	117	16.4	103	22.4	95.3	25.4	86.8	28.3	77.7	31.2	68.1	34.2						
0	—	—	123	21.4	114	24.7	105	28	94.7	31.5	84.3	35.1						
5	—	—	145	19.8	135	23.5	125	27.4	114	31.5	103	35.8						

SW-1-H5000(R404A)																		
Tc	20			30			35			40			45			50		
Te	Pf	Pa	Pf	Pa	Pf	Pa	Pf	Pa	Pf	Pa	Pf	Pa	Pf	Pa	Pf	Pa	Pf	Pa
-20	81.2	21.3	72.9	28.6	66.9	31.6	59.7	34.1	51.5	36.2	42.2	37.9						
-15	101	22	89.3	29.3	82	32.4	73.7	35.2	64.3	37.8	54.1	40.1						
-10	123	21.8	109	29.2	100	32.6	90.5	35.9	80.1	38.9	68.9	41.9						
-5	149	20.9	131	28.5	121	32.3	110	36	98.8	39.7	86.6	43.5						
0	—	—	157	27.2	145	31.3	133	35.6	120	40.1	107	44.7						
5	—	—	185	25.1	172	29.8	159	34.8	145	40	131	45.5						

SW-1-H6000(R404A)																		
Tc	20			30			35			40			45			50		
Te	Pf	Pa	Pf	Pa	Pf	Pa	Pf	Pa	Pf	Pa	Pf	Pa	Pf	Pa	Pf	Pa	Pf	Pa
-20	94.8	24.8	85	33.4	78	36.9	69.7	39.8	60.1	42.2	49.2	44.2						
-15	118	25.6	104	34.1	95.7	37.8	85.9	41.1	75.1	44.1	63.1	46.7						
-10	144	25.5	127	34.1	117	38.1	106	41.8	93.5	45.4	80.4	48.9						
-5	174	24.4	153	33.3	141	37.7	129	42	115	46.3	101	50.7						
0	—	—	183	31.7	169	36.6	155	41.6	140	46.7	125	52.1						
5	—	—	216	29.3	201	34.8	185	40.6	169	46.7	152	53.1						

SW-1-H7500(R404A)																		
Tc	20			30			35			40			45			50		
Te	Pf	Pa	Pf	Pa	Pf	Pa	Pf	Pa	Pf	Pa	Pf	Pa	Pf	Pa	Pf	Pa	Pf	Pa
-20	111	29.1	99.6	39.1	91.4	43.2	81.6	46.6	70.3	49.5	57.6	51.8						
-15	138	30	122	40	112	44.3	101	48.1	87.9	51.6	73.9	54.8						
-10	168	29.8	149	39.9	137	44.6	124	49	110	53.2	94.1	57.3						
-5	203	28.5	179	39	166	44.1	151	49.2	135	54.3	118	59.4						
0	—	—	214	37.1	198	42.8	182	48.7	165	54.8	146	61.1						
5	—	—	253	34.4	235	40.8	217	47.5	198	54.7	178	62.2						

SW-1-H9000(R404A)																		
Tc	20			30			35			40			45			50		
Te	Pf	Pa	Pf	Pa	Pf	Pa	Pf	Pa	Pf	Pa	Pf	Pa	Pf	Pa	Pf	Pa	Pf	Pa
-20	128	33.6	115	45.3	106	49.8	94.4	53.9	81.3	57.2	66.6	59.9						
-15	159	34.7	141	46.2	130	51.2	116	55.7	102	59.7	85.4	63.3						
-10	195	34.5	172	46.2	158	51.5	143	56.7	127	61.5	109	66.2						
-5	235	33	207	45.1	191	51	174	56.9	156	62.8	137	68.7						
0	—	—	247	42.9	229	49.5	210	56.3	190	63.3	169	70.6						
5	—	—	292	39.7	272	47.1	251	54.9	229	63.2	206	71.9						

SW-1-H10500(R404A)																		
Tc	20			30			35			40			45			50		
Te	Pf	Pa	Pf	Pa	Pf	Pa	Pf	Pa	Pf	Pa	Pf	Pa	Pf	Pa	Pf	Pa	Pf	Pa
-20	155	40.6	139	54.6	128	60.3	114	65.1	98.2	69.1	80.4	72.3						
-15	192	41.9	170	55.8	156	61.8	141	67.2	123	72	103	79.9						
-10	235	41.6	207	55.7	191	62.2	173	68.4	153	74.3	131	82.9						
-5	284	39.8	250	54.4	231	61.5	210	68.6	188	75.7	165	85.2						
0	—	—	298	51.8	277	59.8	254	67.9	230	76.4	204	85.2						
5	—	—	352	47.9	328	56.9	303	66.3	276	76.3	249	86.8						

SW-1-H11500(R404A)																		
Tc	20			30			35			40			45			50		
Te	Pf	Pa	Pf	Pa	Pf	Pa	Pf	Pa	Pf	Pa	Pf	Pa	Pf	Pa	Pf	Pa	Pf	Pa
-20	172	45.1	155	60.7	142	67	127	72.3	109	76.8	89.5	80.4						
-15	214	46.5	189	62	174	68.7	156	74.7	136	80.1	115	84.9						
-10	261	46.3	231	61.9	212	69.2	192	76	170	82.6	146	88.9						
-5	315	44.3	278	60.5	257	68.4	234	76.3	210	84.2	184	92.1						
0	—	—	332	57.6	308	66.5	282	75.6	255	85	227	94.7						
5	—	—	392	53.3	365	63.2	336	73.7	307	84.8	277	96.5						

SW-1-H12500(R404A)																		
Tc	20			30			35			40			45			50		
Te	Pf	Pa	Pf	Pa	Pf	Pa	Pf	Pa	Pf	Pa	Pf	Pa	Pf	Pa	Pf	Pa	Pf	Pa
-20	185	48.3	166	65.1	152	71.9	136	77.6	117	82.3	95.9	86.2						
-15	229	49.9	203	66.5	186	73.6	168	80.1	146	85.9	123	91.1						
-10	280	49.6	247	66.4	228	74.2	206	81.5	182	88.6	157	95.3						
-5	338	47.5	298	64.9	275	73.4	251	81.8	225	90.3	197	98.8						
0	—	—	356	61.8	330	71.3	303	81	274	91.1	244	102						
5	—	—	420	57.1	391	67.8	361	79	329	90.9	297	104						

PERFORMANCES

性能参数

18

SW

SW-1-H14000(R404A)												
Tc	20		30		35		40		45		50	
Te	Pf	Pa	Pf	Pa	Pf	Pa	Pf	Pa	Pf	Pa	Pf	Pa
-20	193.7	61.4	174.6	74.4	163.5	80.1	150	85.1	133.1	88.9	111.7	91.4
-15	242.1	67.5	216.6	79.7	202.7	85.5	186.6	90.7	167.4	95.1	144.1	98.3
-10	299.7	71.4	267.7	84	251	90.3	232.3	96.3	210.8	101.6	185.3	106.1
-5	367.2	73.2	328.6	87	308.9	94.4	287.7	101.6	263.7	108.4	236.1	114.6
0	—	—	399.8	88.7	377.2	97.5	353.2	106.4	326.9	115.2	297.1	123.6
5	—	—	482	88.7	456.4	99.5	429.7	110.7	400.8	121.9	368.8	133

SW-1-H16000(R404A)												
Tc	20		30		35		40		45		50	
Te	Pf	Pa	Pf	Pa	Pf	Pa	Pf	Pa	Pf	Pa	Pf	Pa
-20	204.4	70.7	193.2	82.3	181.6	88.5	166	94.2	146.7	98.6	123.6	101.1
-15	257.9	77.4	239.7	88.2	225	94.5	206.6	100.4	184.7	105.4	159.5	108.8
-10	321.7	81.8	296.3	93	278.4	99.8	257.2	106.6	232.7	112.7	205.2	117.4
-5	396.4	83.7	363.7	96.3	342.6	104.3	318.4	112.4	291.3	120.2	261.4	126.8
0	—	—	442.6	98.1	418.2	107.7	391	117.8	361.2	127.7	328.9	136.8
5	—	—	533.6	98.2	505.8	110	475.6	122.5	443	135.2	408.2	147.3

SW-1-H19000(R404A)												
Tc	20		30		35		40		45		50	
Te	Pf	Pa	Pf	Pa	Pf	Pa	Pf	Pa	Pf	Pa	Pf	Pa
-20	244.3	75.4	221.5	94.3	207.5	101.8	190.3	107.9	168.7	112.7	141.7	115.9
-15	305.7	83.1	274.8	101.1	257.2	108.7	236.8	115.1	212.3	120.5	182.8	124.7
-10	378.8	88.1	339.6	106.6	318.5	114.7	294.8	122.1	267.3	128.8	235.1	134.6
-5	464.4	90.4	416.9	110.4	392	119.9	364.9	128.9	334.5	137.4	299.6	145.3
0	—	—	507.2	112.5	478.6	123.8	448.1	135	414.6	146	376.9	156.8
5	—	—	611.5	112.6	579.1	126.4	545.1	140.4	508.4	154.6	467.9	168.8

SW-1-H21000(R404A)												
Tc	20		30		35		40		45		50	
Te	Pf	Pa	Pf	Pa	Pf	Pa	Pf	Pa	Pf	Pa	Pf	Pa
-20	267.1	86	244	104	228.8	112	209.7	118.9	185.8	124.3	156.1	127.7
-15	334.7	94.5	302.8	111.4	283.6	119.5	260.9	126.8	233.9	132.9	201.4	137.4
-10	415.3	100	374.3	117.4	351.1	126.2	324.8	134.6	294.5	142.1	259.1	148.3
-5	509.6	102.5	459.4	121.7	432.1	131.9	402.1	142	368.5	151.5	330.1	160.2
0	—	—	559	124	527.6	136.3	493.8	148.8	456.7	161.1	415.3	172.8
5	—	—	673.9	124	638.3	139.1	600.7	154.7	560.1	170.5	515.6	186

SW-1-H24000(R404A)												
Tc	20		30		35		40		45		50	
Te	Pf	Pa	Pf	Pa	Pf	Pa	Pf	Pa	Pf	Pa	Pf	Pa
-20	263.1	91.7	260.5	111	245.6	119.6	223.8	127	197	132.7	166.7	136.4
-15	335.3	100.7	323.2	119	304.1	127.6	278.6	135.4	248.3	141.9	215	146.7
-10	421.3	106.6	399.6	125.4	376.2	134.8	346.8	143.7	313	151.7	276.6	158.3
-5	522.1	109.3	490.4	129.9	462.7	140.8	429.3	151.6	392	161.8	352.5	171
0	—	—	596.8	132.3	564.6	145.5	527.2	158.8	486.2	172	44.34	184.5
5	—	—	719.5	132.4	682.8	148.5	641.3	165.2	596.6	182	550.4	198.6

SW-1-H25000(R404A)												
Tc	20		30		35		40		45		50	
Te	Pf	Pa	Pf	Pa	Pf	Pa	Pf	Pa	Pf	Pa	Pf	Pa
-20	317.4	110.2	304	129.5	285.9	139.3	261.2	148.2	230.4	155	194.5	159.1
-15	401.6	120.7	377.1	138.8	354.2	148.7	325	158	290.3	165.8	250.9	171.1
-10	502	127.6	466.2	146.3	438.2	157.1	404.6	167.7	365.8	177.2	322.7	184.7
-5	619.5	130.7	572.2	151.5	539.2	164.1	500.9	176.9	458	188.9	411.2	199.5
0	—	—	696.2	154.4	658.1	169.5	615.1	185.3	567.9	200.8	517.3	215.2
5	—	—	839.4	154.5	796	173.1	748.2	192.7	696.7	212.5	642.2	231.6

KEY / 图例

Pf = Cooling Capacity / 冷量 (kW)

Pa = Input Power / 输入电功率 (kW)


Te = Evaporating temperature / 蒸发温度 (°C)


Tc = Condensing temperature / 冷凝温度 (°C)

50 Hz frequency / 频率

Liquid subcooling / 液体过冷度 5K

Suction gas superheat / 吸气过热度 10K

 Working conditions which need not oil cooling
此工况范围内不需要油冷却

 Working conditions which require the additional cooling (see application limits)
此工况范围内需要油冷却(具体参看“应用范围”章节)

PERFORMANCES

性能参数

SW3L (可带经济器), 制冷剂R404A / R507

SW-3-L3000(R404A)												
Tc	20		30		35		40		45		50	
Te	Pf	Pa	Pf	Pa	Pf	Pa	Pf	Pa	Pf	Pa	Pf	Pa
-50	12.8	14	10.7	16.8	9.6	18.5	—	—	—	—	—	—
-40	23.1	15.3	20	18.2	18.3	20	16.5	22	14.7	24.1	12.6	26.5
-35	29.9	16.1	26.1	19.1	24	20.9	21.9	22.9	19.5	25.1	17.1	27.5
-30	38.2	17.2	33.4	20.1	30.9	21.9	28.3	23.9	25.5	26.2	22.5	28.7
-25	47.9	18.4	42.2	21.3	39.1	23.1	35.9	25.1	32.6	27.4	29	29.9
-20	59.5	19.9	52.6	22.7	48.9	24.5	45.1	26.6	41.1	28.9	36.9	31.4
-15	—	—	—	—	—	—	—	—	—	—	46.2	33.1

SW-3-L3000(R404A) with ECO / 带经济器												
Tc	20		30		35		40		45		50	
Te	Pf	Pa	Pf	Pa	Pf	Pa	Pf	Pa	Pf	Pa	Pf	Pa
-50	18.3	16.9	16.9	21.7	16	24.7	—	—	—	—	—	—
-40	30.5	17.4	28.8	22	27.8	24.9	26.5	28.2	24.9	31.9	23	36.2
-35	38.1	17.8	36.2	22.4	34.9	25.2	33.4	28.5	31.6	32.2	29.5	36.4
-30	46.8	18.3	44.6	22.8	43.2	25.7	41.5	29	39.4	32.7	37	36.9
-25	56.7	19.1	54.2	23.5	52.6	26.3	50.6	29.5	48.3	33.3	45.5	37.5
-20	67.9	20	65	24.3	63.2	27.1	61	30.3	58.4	34	55.3	38.2
-15	—	—	—	—	—	—	—	—	—	—	66.5	39.1

SW-3-L4000(R404A)												
Tc	20		30		35		40		45		50	
Te	Pf	Pa	Pf	Pa	Pf	Pa	Pf	Pa	Pf	Pa	Pf	Pa
-50	16.3	17.3	13.7	20.9	12.4	23.1	—	—	—	—	—	—
-40	30.2	19.2	26.1	22.8	24.1	25	21.8	27.5	19.4	30.4	16.8	33.6
-35	39.4	20.4	34.4	23.9	31.7	26.1	29	28.6	26	31.5	22.7	34.8
-30	50.4	21.7	44.2	25.2	41	27.4	37.6	29.9	33.9	32.8	29.9	36.2
-25	63.4	23.3	56	26.7	52.1	28.8	47.9	31.4	43.5	34.3	38.7	37.7
-20	78.8	25.2	69.9	28.4	65.2	30.6	60.2	33.1	55	36.1	49.3	39.4
-15	—	—	—	—	—	—	—	—	—	—	62	41.4

SW-3-L4000(R404A) with ECO / 带经济器												
Tc	20		30		35		40		45		50	
Te	Pf	Pa	Pf	Pa	Pf	Pa	Pf	Pa	Pf	Pa	Pf	Pa
-50	22.7	20.3	20.9	26	20	29.5	—	—	—	—	—	—
-40	38.9	21.1	36.6	26.5	35.3	29.8	33.6	33.7	31.7	38.2	29.2	43.4
-35	48.8	21.7	46.2	26.9	44.6	30.2	42.7	34.1	40.3	38.5	37.4	43.7
-30	60.2	22.4	57.2	27.5	55.3	30.8	53.1	34.6	50.3	39	47	44.2
-25	73.1	23.3	69.7	28.3	67.6	31.5	65	35.3	61.9	39.7	58.1	44.8
-20	87.5	24.5	83.8	29.2	81.4	32.4	78.5	36.1	75	40.5	70.8	45.6
-15	—	—	—	—	—	—	—	—	—	—	85.3	46.6

SW-3-L5000(R404A)												
Tc	20		30		35		40		45		50	
Te	Pf	Pa	Pf	Pa	Pf	Pa	Pf	Pa	Pf	Pa	Pf	Pa
-50	19	19.7	15.9	23.8	14.4	26.2	—	—	—	—	—	—
-40	35.3	21.9	30.5	25.9	28.1	28.4	28.5	31.3	22.7	34.5	19.6	38.2
-35	46	23.2	40.1	27.2	37	29.7	33.8	32.6	30.3	35.9	26.5	39.6
-30	58.8	24.7	51.6	28.6	47.8	31.1	43.8	34	39.5	37.4	34.9	41.1
-25	74	26.5	65.3	30.3	60.7	32.8	55.9	35.7	50.7	39	45.1	42.9
-20	91.9	28.6	81.6	32.3	76.1	34.8	70.3	37.6	64.1	41	57.5	44.8
-15	—	—	—	—	—	—	—	—	—	—	72.4	47.1

SW-3-L5000(R404A) with ECO / 带经济器												
Tc	20		30		35		40		45		50	
Te	Pf	Pa	Pf	Pa	Pf	Pa	Pf	Pa	Pf	Pa	Pf	Pa
-50	26.1	22.6	24	28.9	22.9	32.8	—	—	—	—	—	—
-40	44.7	23.5	41.9	29.4	40.3	33.1	38.4	37.4	36.1	42.3	33.2	48.1
-35	56.1	24.1	52.9	29.9	51	33.6	48.8	37.8	46	42.7	42.6	48.4
-30	69.1	25	65.5	30.6	63.3	34.2	60.6	38.4	57.4	43.3	53.5	49
-25	83.8	26	79.8	31.4	77.3	35	74.2	39.1	70.6	44	66.1	49.6
-20	100.4	27.3	95.9	32.5	93.1	36	89.7	40.1	85.6	44.9	80.6	50.5
-15	—	—	—	—	—	—	—	—	—	—	97.1	51.5

SW-3-L6000(R404A)												
Tc	20		30		35		40		45		50	
Te	Pf	Pa	Pf	Pa	Pf	Pa	Pf	Pa	Pf	Pa	Pf	Pa
-50	22.9	22.8	19.5	27.1	17.8	29.8	—	—	—	—	—	—
-40	41.4	26.2	36.1	30.3	33.3	32.8	30.3	35.8	27.1	39.2	23.5	43.2
-35	53.7	28.1	47.1	32.2	43.5	34.8	39.8	37.7	35.7	41.1	31.3	45.1
-30	68.6	30.1	60.3	34.4	55.9	37	51.3	40	46.3	43.4	40.9	47.3
-25	86.3	32.3	76.1	36.8	70.8	39.5	65.1	42.5	59	46	52.5	50
-20	107	34.6	94.9	39.5	88.4	42.3	81.6	45.4	74.3	49	66.6	53
-15	—	—	—	—	—	—	—	—	—	—	83.4	56.4

SW-3-L6000(R404A) with ECO / 带经济器												
Tc	20		30		35		40		45		50	
Te	Pf	Pa	Pf	Pa	Pf	Pa	Pf	Pa	Pf	Pa	Pf	Pa
-50	32	26.9	29.7	33.6	28.4	37.7	—	—	—	—	—	—
-40	53.7	29.1	50.6	35.4	48.7	39.3	46.4	43.7	43.6	48.9	40.2	55
-35	67.3	30.4	63.6	36.7	61.3	40.6	58.6	45	55.2	50.2	51.2	56.1
-30	82.9	31.7	78.6	38.2	75.9	42.1	72.7	46.6	68.7	51.8	64	57.7
-25	100.9	33	95.8	39.8	92.6	43.8	88.9	48.4	84.3	53.7	78.8	59.7
-20	121.1	34.4	115.3	41.5	111.7	45.6	107.4	50.4	102.2	55.7	96	61.9
-15	—	—	—	—	—	—	—	—	—	—	115.6	64.3

PERFORMANCES

性能参数

20

SW

SW-3-L7000(R404A)													
Tc	20		30		35		40		45		50		
Te	Pf	Pa	Pf	Pa	Pf	Pa	Pf	Pa	Pf	Pa	Pf	Pa	
-50	26.5	26.5	22.5	31.5	20.6	34.6	—	—	—	—	—	—	
-40	47.9	30.4	41.7	35.2	38.5	38.1	35	41.6	31.3	45.6	27.1	50.2	
-35	62.1	32.6	54.4	37.5	50.3	40.4	46	43.8	41.3	47.8	36.2	52.4	
-30	79.3	35	69.7	40	64.7	43	59.3	46.4	53.5	50.4	47.3	55	
-25	99.8	37.5	88	42.8	81.8	45.9	75.3	49.4	68.3	53.4	60.7	58.1	
-20	123.9	40.2	109.7	45.9	102.2	49.1	94.3	52.7	86	56.9	77	61.6	
-15	—	—	—	—	—	—	—	—	—	—	96.5	65.5	

SW-3-L7000(R404A) with ECO / 带经济器													
Tc	20		30		35		40		45		50		
Te	Pf	Pa	Pf	Pa	Pf	Pa	Pf	Pa	Pf	Pa	Pf	Pa	
-50	36.7	30.9	34.2	38.7	32.7	43.6	—	—	—	—	—	—	
-40	61.4	33.2	58.1	40.6	56	45.2	53.5	50.5	50.4	56.6	46.5	64	
-35	76.9	34.6	72.9	42	70.4	46.6	67.4	51.8	63.6	57.9	59.1	65.1	
-30	94.6	36.1	89.9	43.6	86.9	48.2	83.4	53.4	79	59.5	73.7	66.7	
-25	114.8	37.6	109.3	45.3	105.9	50	101.7	55.3	96.7	61.5	90.6	68.6	
-20	137.6	39.1	131.3	47.1	127.4	51.9	122.6	57.4	116.9	63.7	110.1	70.9	
-15	—	—	—	—	—	—	—	—	—	—	132.2	73.4	

SW-3-L8000(R404A)													
Tc	20		30		35		40		45		50		
Te	Pf	Pa	Pf	Pa	Pf	Pa	Pf	Pa	Pf	Pa	Pf	Pa	
-50	32	31.9	27.2	37.8	24.8	44.5	—	—	—	—	—	—	
-40	57.8	36.5	50.3	42.3	46.4	45.8	42.3	49.9	37.7	54.7	32.7	60.3	
-35	75	39.1	65.7	45	60.7	48.5	55.5	52.6	49.9	57.4	43.7	62.9	
-30	95.7	42	84.1	48	78	51.6	71.5	55.8	64.6	60.5	57	66	
-25	120.4	45.1	106.2	51.4	98.7	55.1	90.8	59.3	82.4	64.2	73.3	69.7	
-20	149.6	48.3	132.4	55.1	123.4	58.9	113.8	63.3	103.7	68.3	92.9	73.9	
-15	—	—	—	—	—	—	—	—	—	—	116.4	78.7	

SW-3-L8000(R404A) with ECO / 带经济器													
Tc	20		30		35		40		45		50		
Te	Pf	Pa	Pf	Pa	Pf	Pa	Pf	Pa	Pf	Pa	Pf	Pa	
-50	43.7	36.5	40.5	45.5	38.6	51	—	—	—	—	—	—	
-40	73.3	39.5	69	48	66.3	53.2	63.1	59.2	59.2	66.2	54.4	74.5	
-35	91.8	41.2	86.7	49.7	83.5	54.9	79.6	60.9	74.9	67.8	69.3	76	
-30	113.2	42.9	107.1	51.7	103.3	57	98.7	63	93.2	70	86.6	78.1	
-25	137.6	44.8	130.4	53.8	126	59.2	120.7	65.4	114.3	72.4	106.8	80.6	
-20	165.1	46.7	156.9	56.1	151.8	61.6	145.8	68	138.5	75.2	130	83.5	
-15	—	—	—	—	—	—	—	—	—	—	156.5	86.6	

SW-3-L9500(R404A)													
Tc	20		30		35		40		45		50		
Te	Pf	Pa	Pf	Pa	Pf	Pa	Pf	Pa	Pf	Pa	Pf	Pa	
-50	35.6	35.3	30.3	41.9	27.6	46.1	—	—	—	—	—	—	
-40	64.2	40.5	56	46.9	51.6	50.8	47	55.4	42	60.7	36.4	66.9	
-35	83.4	43.4	73	49.9	67.5	53.8	61.7	58.4	55.4	63.6	48.6	69.8	
-30	106.4	46.6	93.5	53.3	86.7	57.3	79.5	61.8	71.8	67.1	63.4	73.2	
-25	133.9	50	118.1	57	109.8	61.1	101	65.8	91.6	71.2	81.5	77.3	
-20	166.3	53.6	147.3	61.1	137.2	65.4	126.6	70.2	115.3	75.7	103.3	82	
-15	—	—	—	—	—	—	—	—	—	—	129.4	87.3	

SW-3-L9500(R404A) with ECO / 带经济器													
Tc	20		30		35		40		45		50		
Te	Pf	Pa	Pf	Pa	Pf	Pa	Pf	Pa	Pf	Pa	Pf	Pa	
-50	48.1	39.9	44.5	49.7	42.4	55.8	—	—	—	—	—	—	
-40	80.5	43.1	75.7	52.4	72.8	58	69.2	64.6	64.9	72.3	59.6	81.5	
-35	100.8	44.9	95.1	54.2	91.5	59.9	87.3	66.5	82.1	74.1	75.9	83	
-30	124.1	46.8	117.4	56.3	113.2	62.1	108.2	68.7	102.1	76.3	94.8	85.2	
-25	150.8	48.9	142.9	58.6	138	64.5	132.2	71.2	125.2	78.9	116.8	87.9	
-20	180.8	51	171.8	61.1	166.2	67.1	159.5	74	151.6	81.8	142.2	90.9	
-15	—	—	—	—	—	—	—	—	—	—	171	94.2	

SW-3-L10500(R404A)													
Tc	20		30		35		40		45		50		
Te	Pf	Pa	Pf	Pa	Pf	Pa	Pf	Pa	Pf	Pa	Pf	Pa	
-50	37.8	37.8	32.1	44.9	29.3	49.3	—	—	—	—	—	—	
-40	68.2	43.3	59.5	50.2	54.9	54.4	49.9	59.3	44.6	65	38.7	71.6	
-35	88.6	46.5	77.6	53.4	71.8	57.6	65.6	62.5	58.9	68.1	51.6	74.7	
-30	113.1	49.9	99.4	57	92.2	61.3	84.5	66.2	76.3	71.9	67.4	78.4	
-25	142.2	53.5	125.5	61	116.7	65.4	107.3	70.5	97.3	76.2	86.6	82.8	
-20	176.7	57.4	156.5	65.4	145.8	70	134.5	75.2	122.6	81.1	109.8	87.8	
-15	—	—	—	—	—	—	—	—	—	—	137.5	93.4	

SW-3-L10500(R404A) with ECO / 带经济器													
Tc	20		30		35		40		45		50		
Te	Pf	Pa	Pf	Pa	Pf	Pa	Pf	Pa	Pf	Pa	Pf	Pa	
-50	50.7	42.2	47	52.7	44.8	59.2	—	—	—	—	—	—	
-40	84.8	45.6	79.8	55.5	76.7	61.5	73	68.6	68.5	76.9	63	86.7	
-35	106.1	47.5	100.1	57.4	96.4	63.4	92	70.4	86.6	78.6	80.1	88.2	
-30	130.5	49.5	123.5	59.6	119.4	65.6	113.9	72.7	107.6	80.8	100	90.4	
-25	158.4	51.7	150.2	61.9	145.1	68.1	139	75.2	131.7	83.5	123	93	
-20	189.7	53.9	180.4	64.5	174.5	70.8	167.6	78.1	159.3	86.4	149.5	96.1	
-15	—	—	—	—	—	—	—	—	—	—	179.6	99.5	

PERFORMANCES

性能参数

SW-3-L11500(R404A)												
Tc	20		30		35		40		45		50	
Te	Pf	Pa	Pf	Pa	Pf	Pa	Pf	Pa	Pf	Pa	Pf	Pa
-50	46.4	43.8	38.4	52.4	34.1	57	—	—	—	—	—	—
-40	81.4	48.6	69.8	57.9	63.6	63	57	68.5	50	74.7	42.5	81.5
-35	104.8	51.3	90.6	60.7	83	66	75	71.8	66.6	78.1	57.7	85.2
-30	132.8	54.5	115.5	63.9	106.3	69.3	96.7	75.2	86.6	81.8	76	89.2
-25	166.3	58.2	145.3	67.6	134.3	73	122.7	79.1	110.7	85.8	98.1	93.4
-20	205.7	62.7	180.6	72	167.4	77.4	153.7	83.5	139.4	90.4	124.6	98.1
-15	—	—	—	—	—	—	—	—	—	—	156.2	103.5

SW-3-L11500(R404A) with ECO / 带经济器													
Tc	20		30		35		40		45		55		
Te	Pf	Pa	Pf	Pa	Pf	Pa	Pf	Pa	Pf	Pa	Pf	Pa	
-50	66.2	52.6	61	68.1	57.5	77.3	—	—	—	—	—	—	
-40	107.1	54.5	101.2	69.8	97.3	78.9	92.6	89.4	86.8	101.6	79.8	116.2	
-35	132.4	55.6	125.7	70.6	121.4	79.5	116.2	90.2	109.9	102.3	102.3	116.7	
-30	161.3	57	153.7	71.8	148.8	80.8	143	91.1	136.1	103.2	127.8	117.4	
-25	194	58.8	185.3	73.2	179.8	82.1	173.4	92.4	165.8	104.4	156.7	118.5	
-20	230.6	61.3	220.8	75.2	214.7	83.9	207.5	94.1	199.2	106	189.4	119.9	
-15	—	—	—	—	—	—	—	—	—	—	226	121.9	

SW-3-L13000(R404A)												
Tc	20		30		35		40		45		50	
Te	Pf	Pa	Pf	Pa	Pf	Pa	Pf	Pa	Pf	Pa	Pf	Pa
-50	51.9	48.5	43	58	38.1	63.1	—	—	—	—	—	—
-40	91	53.8	78.1	64	71.1	69.7	63.7	75.9	55.9	82.6	47.5	90.2
-35	117.2	56.8	101.3	67.2	92.8	73	83.9	79.4	74.5	86.5	64.5	94.4
-30	148.6	60.3	129.2	70.7	118.9	76.7	108.2	83.3	96.9	90.6	85	98.7
-25	186	64.4	162.5	74.8	150.2	80.8	137.3	87.5	123.8	95	109.7	103.4
-20	230	69.4	202	79.7	187.2	82.7	171.9	92.4	155.9	100	139.4	108.6
-15	—	—	—	—	—	—	—	—	—	—	174.7	114.5

SW-3-L13000(R404A) with ECO / 带经济器													
Tc	20		30		35		40		45		55		
Te	Pf	Pa	Pf	Pa	Pf	Pa	Pf	Pa	Pf	Pa	Pf	Pa	
-50	73.4	57.6	67.4	74.3	63.5	84.2	—	—	—	—	—	—	
-40	118.8	59.8	112	76.2	107.6	86.1	102.2	97.3	95.7	110.3	87.8	125.8	
-35	146.9	61	139.3	77.3	134.3	87.1	128.3	98.3	121.2	111.3	112.6	126.5	
-30	179.1	62.6	170.3	78.6	164.7	88.3	158	99.4	150.1	112.4	140.7	127.5	
-25	215.5	64.6	205.4	80.3	199.1	89.8	191.7	100.9	183	113.8	172.7	128.8	
-20	256.2	67.4	244.8	82.5	237.8	91.9	229.6	102.9	220	115.6	208.8	130.6	
-15	—	—	—	—	—	—	—	—	—	—	249.3	132.8	

SW-3-L16000(R404A)												
Tc	20		30		35		40		45		50	
Te	Pf	Pa	Pf	Pa	Pf	Pa	Pf	Pa	Pf	Pa	Pf	Pa
-50	60	55.5	49.8	66.4	44.2	72.3	—	—	—	—	—	—
-40	105.4	61.7	90.4	73.4	82.3	79.9	73.8	86.9	64.7	94.7	55	103.3
-35	135.6	65.1	117.3	77	107.5	83.7	97.1	91	86.2	99.1	74.6	108.1
-30	172	69.1	149.6	81.1	137.7	87.9	125.2	95.4	112.2	103.8	98.4	113.1
-25	215.3	73.8	188.2	85.8	173.8	92.6	158.9	100.3	143.3	108.9	127	118.5
-20	266.3	79.5	233.8	91.3	216.7	98.2	199	105.9	180.6	114.7	161.3	124.5
-15	—	—	—	—	—	—	—	—	—	—	202.2	131.3

SW-3-L16000(R404A) with ECO / 带经济器													
Tc	20		30		35		40		45		55		
Te	Pf	Pa	Pf	Pa	Pf	Pa	Pf	Pa	Pf	Pa	Pf	Pa	
-50	85.5	66	79.4	86.5	75.2	99.1	—	—	—	—	—	—	
-40	137.2	67.6	130.8	87.4	126.4	99.6	121	114	114.2	131	105.6	151.8	
-35	168.9	68.7	161.7	88	157	99.9	151.1	114	143.9	130.7	134.9	150.9	
-30	204.8	70.2	196.7	88.8	191.4	100.5	185	114.2	177.2	130.6	167.7	150.3	
-25	245	72.3	235.9	90.2	230	101.5	223	114.9	214.6	130.8	204.4	150	
-20	289.5	75.2	279.3	92.3	272.9	103.2	265.2	116.1	256.2	131.6	245.4	150.3	
-15	—	—	—	—	—	—	—	—	—	—	290.8	151.3	

SW-3-L18000(R404A)												
Tc	20		30		35		40		45		50	
Te	Pf	Pa	Pf	Pa	Pf	Pa	Pf	Pa	Pf	Pa	Pf	Pa
-50	67.8	61.2	56.2	73.2	49.9	79.7	—	—	—	—	—	—
-40	119.1	68	102.2	80.9	93	88	83.4	95.8	73.1	104.4	62.2	113.9
-35	153.2	71.8	132.5	84.9	121.4	92.2	109.7	100.3	97.4	109.2	84.3	119.2
-30	194.3	76.1	169	89.3	155.6	96.9	141.5	105.1	126.7	114.4	111.1	124.7
-25	243.2	81.3	212.6	94.5	196.4	102.1	179.5	110.5	161.9	120	143.5	130.6
-20	300.9	87.6	264.2	100.6	244.9	108.2	224.8	116.8	204	126.3	182.3	137.2
-15	—	—	—	—	—	—	—	—	—	—	228.5	144.7

SW-3-L18000(R404A) with ECO / 带经济器													
Tc	20		30		35		40		45		55		
Te	Pf	Pa	Pf	Pa	Pf	Pa	Pf	Pa	Pf	Pa	Pf	Pa	
-50	93.5	70	85.7	90	80.6	101.9	—	—	—	—	—	—	
-40	150.9	72.6	142	92.3	136.2	104	129.2	117.4	120.8	133	110.7	151.5	
-35	186.3	74.1	176.3	93.5	169.8	105.1	162.1	118.5	152.8	134	141.8	152.2	
-30	226.8	76	215.3	95	207.9	106.5	199.3	119.8	189.1	135.2	177	153.2	
-25	272.4	78.6	259.2	97	251	108.3	241.4	121.4	230.1	136.7	216.8	154.6	
-20	323.2	82.2	308.4	99.9	299.2	110.9	288.6	123.7	276.2	138.8	261.7	156.5	
-15	—	—	—	—	—	—	—	—	—	—	311.9	159	

PERFORMANCES

性能参数

22

SW

SW-3-L20000(R404A)												
Tc	20		30		35		40		45		50	
Te	Pf	Pa	Pf	Pa	Pf	Pa	Pf	Pa	Pf	Pa	Pf	Pa
-50	72.8	65.3	60.3	78.2	53.5	85.1	—	—	—	—	—	—
-40	127.8	72.6	109.6	86.3	99.8	94	89.5	102.3	78.4	111.4	66.7	121.6
-35	164.4	76.6	142.2	90.6	130.3	98.5	117.7	107.1	104.5	116.6	90.5	127.2
-30	208.5	81.3	181.3	95.4	166.9	103.4	151.8	112.3	135.9	122.1	119.2	133.1
-25	261	86.8	228.1	100.9	210.7	109	192.6	118	173.7	128.1	153.9	139.4
-20	322.8	93.5	283.4	107.4	262.7	115.5	241.2	124.6	218.9	134.9	195.6	146.4
-15	—	—	—	—	—	—	—	—	—	—	245.1	154.4

SW-3-L20000(R404A) with ECO / 带经济器												
Tc	20		30		35		40		45		50	
Te	Pf	Pa	Pf	Pa	Pf	Pa	Pf	Pa	Pf	Pa	Pf	Pa
-50	99.2	73.6	91	94.6	85.6	107.2	—	—	—	—	—	—
-40	159.8	76.2	150.4	96.8	144.4	109.2	137	123.3	128.2	139.8	117.4	159.4
-35	197.1	77.7	186.5	98	179.7	110.2	171.6	124.3	161.9	140.6	150.2	159.9
-30	239.5	79.8	227.4	99.5	219.8	111.5	210.7	125.5	200	141.7	187.2	160.7
-25	287.2	82.6	273.5	101.6	264.9	113.4	254.8	127.1	243	143.1	229	161.9
-20	340.3	86.5	324.8	104.6	315.2	116	304.1	129.4	291.1	145.1	276	163.6
-15	—	—	—	—	—	—	—	—	—	—	328.3	166

SW-3-L22000(R404A)												
Tc	20		30		35		40		45		50	
Te	Pf	Pa	Pf	Pa	Pf	Pa	Pf	Pa	Pf	Pa	Pf	Pa
-50	85.3	76.2	70.7	91.2	62.7	99.3	—	—	—	—	—	—
-40	149.8	84.7	128.5	100.7	117	109.6	104.9	119.3	92	130	78.2	141.8
-35	192.8	89.4	166.7	105.7	152.7	114.9	138	124.9	122.5	136.1	106.1	148.4
-30	244.4	94.8	212.6	111.3	195.7	120.6	178	131	159.4	142.5	139.8	155.3
-25	306	101.3	267.4	117.7	247.1	127.2	225.8	137.7	203.7	149.4	180.5	162.6
-20	378.5	109.1	332.3	125.3	308	134.8	282.8	145.4	256.6	157.4	229.3	170.8
-15	—	—	—	—	—	—	—	—	—	—	287.4	180.2

SW-3-L22000(R404A) with ECO / 带经济器												
Tc	20		30		35		40		45		50	
Te	Pf	Pa	Pf	Pa	Pf	Pa	Pf	Pa	Pf	Pa	Pf	Pa
-50	115	84.8	105	108.5	98.6	122.5	—	—	—	—	—	—
-40	185.5	88.1	174	111.4	166.6	125.3	157.7	141.1	147.1	159.4	134.3	180.9
-35	229	90	216	113	207.6	126.8	197.7	142.5	185.9	160.7	172	182
-30	278.6	92.5	263.7	114.9	254.2	128.5	243.1	144.2	230.1	162.3	214.7	183.4
-25	334.5	95.9	317.5	117.6	306.8	130.9	294.4	146.4	280	164.3	263.1	185.3
-20	396.8	100.6	377.5	121.3	365.6	134.2	351.9	149.3	336	167	317.6	187.7
-15	—	—	—	—	—	—	—	—	—	—	378.4	191

KEY / 图例

Pf = Cooling Capacity / 冷量 (kW)

Pa = Input Power / 输入电功率 (kW)


Te = Evaporating temperature / 蒸发温度 (°C)


Tc = Condensing temperature / 冷凝温度 (°C)

50 Hz frequency / 频率

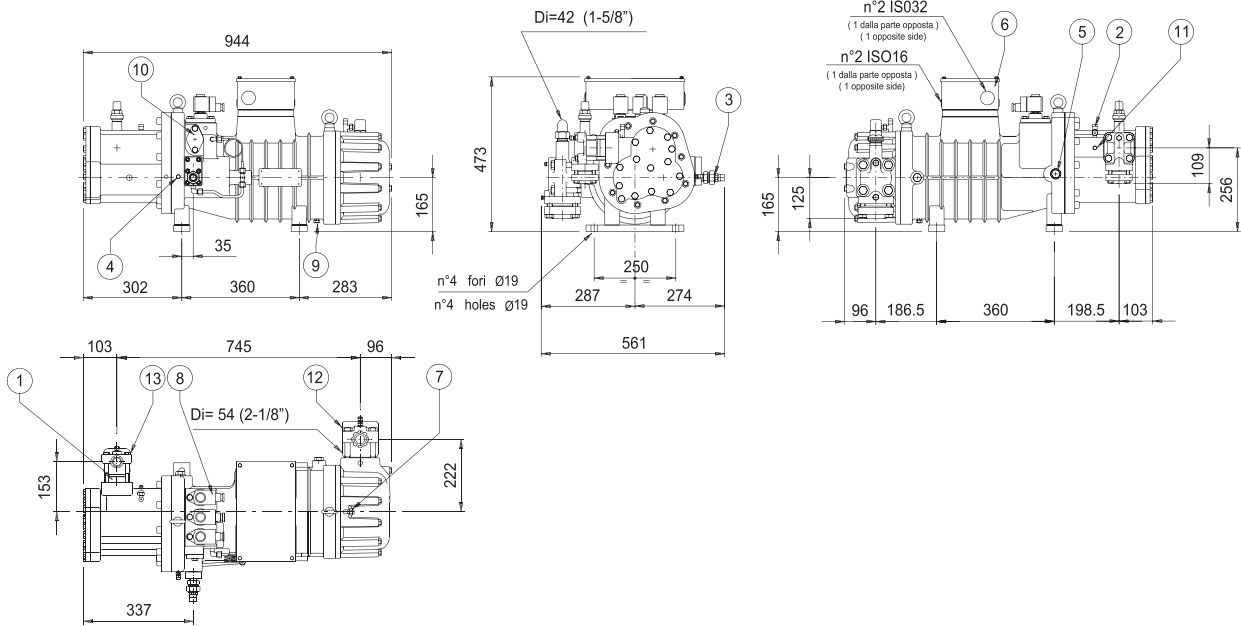
Liquid subcooling / 液体过冷度 5K

Suction gas superheat / 吸气过热度 10K

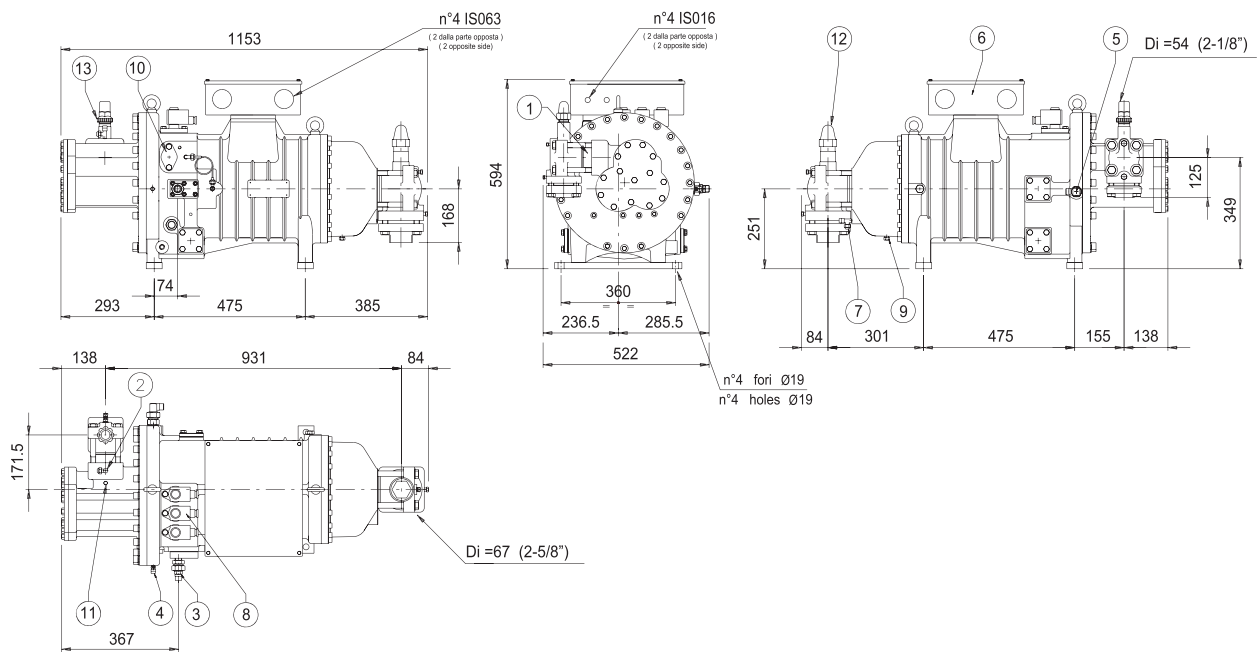
 Working conditions which need not oil cooling
此工况范围内不需要油冷却

 Working conditions which require the additional cooling (see application limits)
此工况范围内需要油冷却(具体参看“应用范围”章节)

SW1H 4000_5000_6000
SW3L 3000_4000_5000



SW1H 7500_9000
SW3L 6000_7000

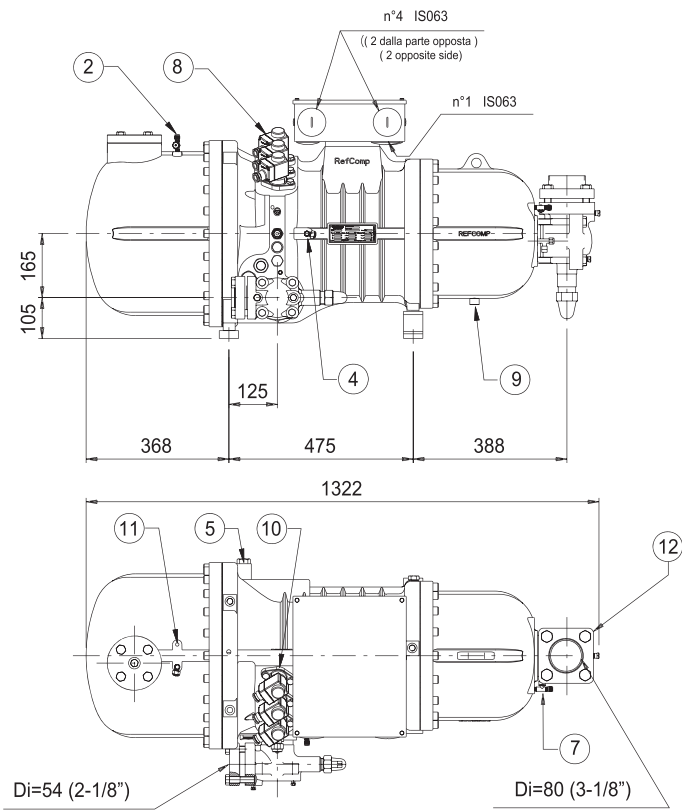
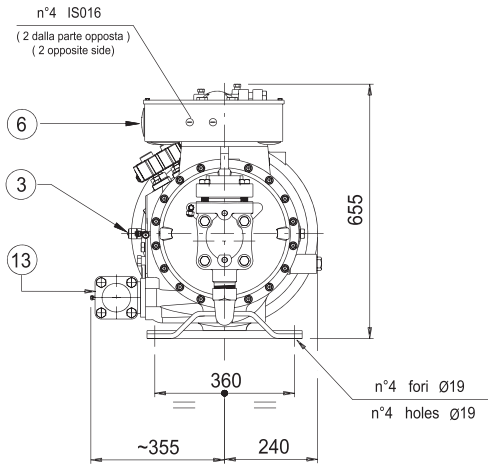


KEY

- 1) Non return valve
- 2) High pressure gas 1/4" SAE-FLARE
- 3) Oil cooler connections
- 4) Oil pressure 1/4" SAE-FLARE
- 5) Liquid injection Ø0.63"/economiser Ø0.866" (optional)
- 6) Electrical box
- 7) Low pressure gas 1/4" SAE-FLARE
- 8) Solenoid valves for part-load operation
- 9) Oil drain motor housing 1/4"-18NPT
- 10) Solenoid valves connection (step-less capacity control)
- 11) Discharge temperature sensor 1/8" NPT
- 12) Suction shut-off valve
- 13) Discharge shut-off valve

图例

- 1) 单向阀
- 2) 高压接头 1/4" SAE-FLARE
- 3) 油路接头 5/8"
- 4) 油压接头 1/4 SAE-FLARE
- 5) 喷液接头 Ø0.63" / 经济器接头 0.866" (选配)
- 6) 接线盒
- 7) 低压接头 1/4" SAE-FLARE
- 8) 能量调节电磁阀
- 9) 放油螺塞 1/4"-18NPT
- 10) 电腾阀板 (有级-无级转换)
- 11) 排气温度传感器 1/8"NPT
- 12) 吸气截止阀
- 13) 排气截止阀



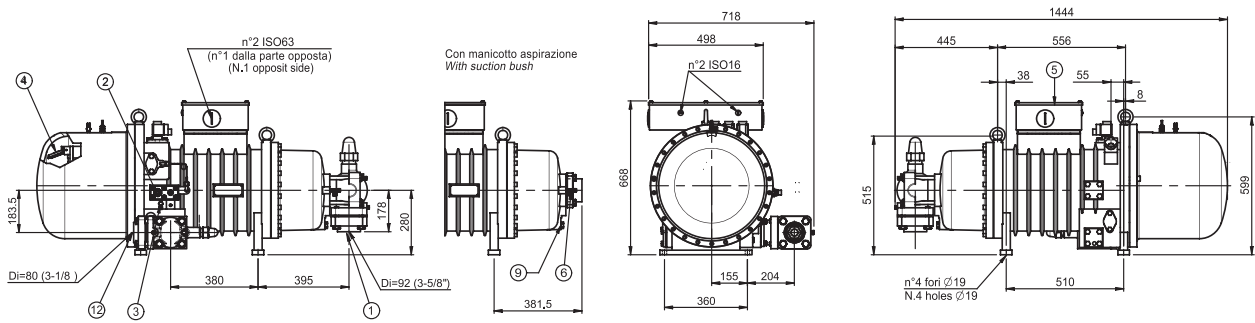
KEY

- 1) Non return valve
- 2) High pressure gas 1/4" SAE-FLARE
- 3) Oil cooler connections
- 4) Oil pressure 1/4" SAE-FLARE
- 5) Liquid injection Ø 0.63"/economiser Ø0.866" (optional)
- 6) Electrical box
- 7) Low pressure gas 1/4" SAE-FLARE
- 8) Solenoid valve for part-load operation
- 9) Oil drain motor housing 1/4"-18NPT
- 10) Solenoid valve connection (step-less capacity control)
- 11) Discharge temperature sensor 1/8"NPT
- 12) Suction shut-off valve
- 13) Discharge shut-off valve

图例

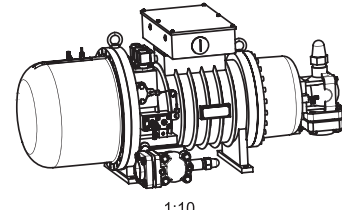
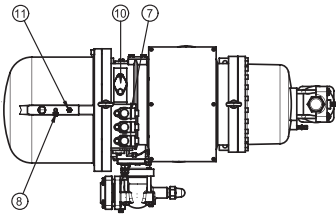
- 1) 单向阀
- 2) 高压接头 1/4" SAE-FLARE
- 3) 油路接头 5/8"
- 4) 油压接头 1/4" SAE-FLARE
- 5) 喷液接头Ø0.63"/经济器接头Ø0.866"(选配)
- 6) 接线盒
- 7) 低压接头 1/4" SAE-FLARE
- 8) 能量调节电磁阀
- 9) 吸气端放油螺塞 1/4"-18NPT
- 10) 电腾阀板(有级-无级转换)
- 11) 排气温度传感器 1/8"NPT
- 12) 吸气截止阀
- 13) 排气截止阀

SW1H 14000_16000_19000
SW3L 11500_13000_16000



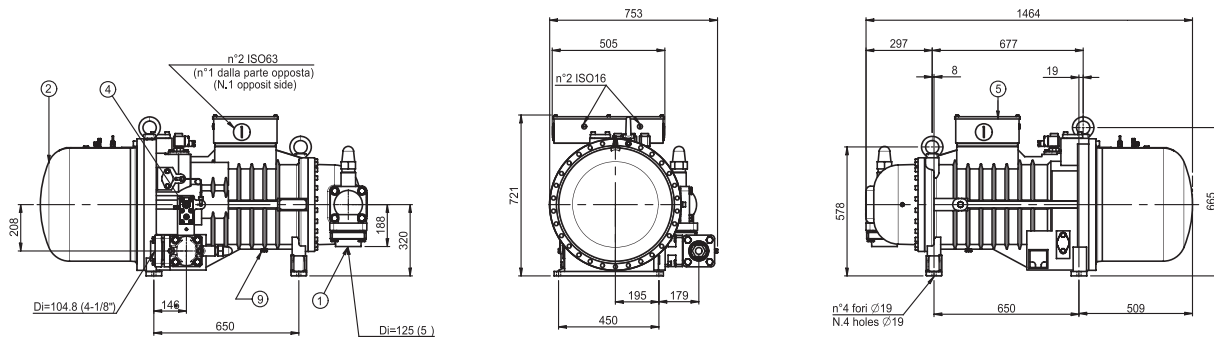
可能用到的连接

Possible connections	
Ø= Suction	Ø= Discharge
67 (2-5/8")	54 (2-1/8")
76 (2-1/2")	67 (2-5/8")
80 (3-1/8")	76 (2-1/2")
89 (3-3")	80 (3-1/8")
92 (3-5/8")	



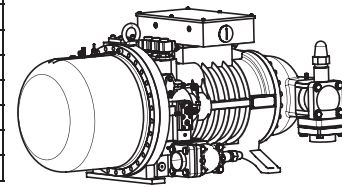
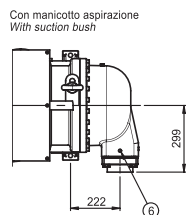
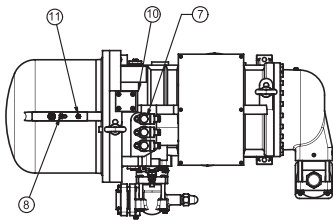
1:10

SW1H 21000_24000_25000
SW3L 18000_20000_22000



可能用到的连接

Possible connections	
Ø= Suction	Ø= Discharge
77 (---)	54 (2-1/8")
80 (3-1/8")	67 (2-5/8")
89 (3-1/2")	76 (2-1/2")
92 (3-5/8")	80 (3-1/8")
105 (4-1/8")	
108 (4-1/4")	



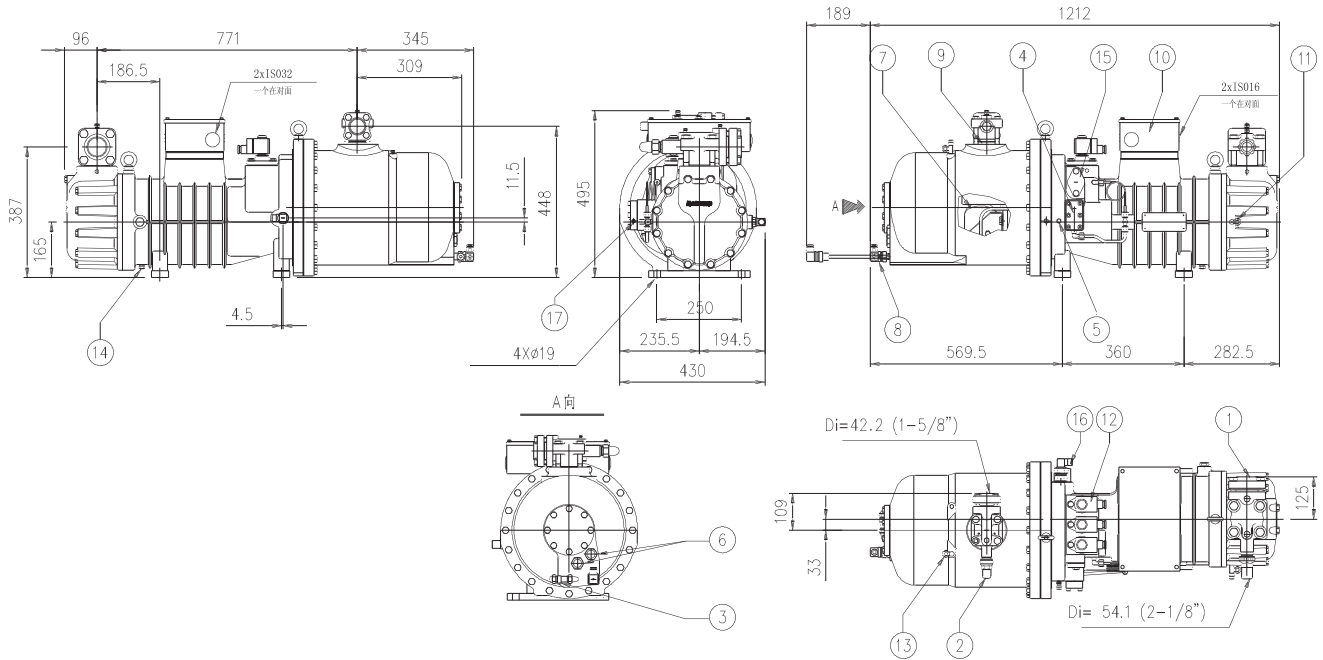
1:10

KEY

- 1) Suction connection
- 2) Oil line connections
- 3) Oil pressure 1/4" SAE-FLARE
- 4) Non return valve
- 5) Electrical box
- 6) Low pressure gas 1/4" SAE-FLARE
- 7) Solenoid valves for part-load operation.
- 8) High pressure gas 1/4" SAE-FLARE
- 9) Oil drain motor housing M14
- 10) Liquid injection connection Ø28 / Economizer shut-off valve Ø42 (optional)
- 11) Discharge temperature sensor 1/8" NPT (optional)
- 12) Discharge connection

图例

- 1) 吸气接头
- 2) 油路接头 5/8"
- 3) 油压接头 1/4" SAE-FLARE
- 4) 单向阀
- 5) 接线盒
- 6) 油压接头 1/4" SAE-FLARE
- 7) 部分负荷调节电磁阀
- 8) 高压接头 1/4" SAE-FLARE
- 9) 放油螺塞 M14
- 10) 喷液接头 Ø28/ 经济器截止阀 Ø42
- 11) 排气温度传感器 1/8" NPT (选配)
- 12) 排气接头



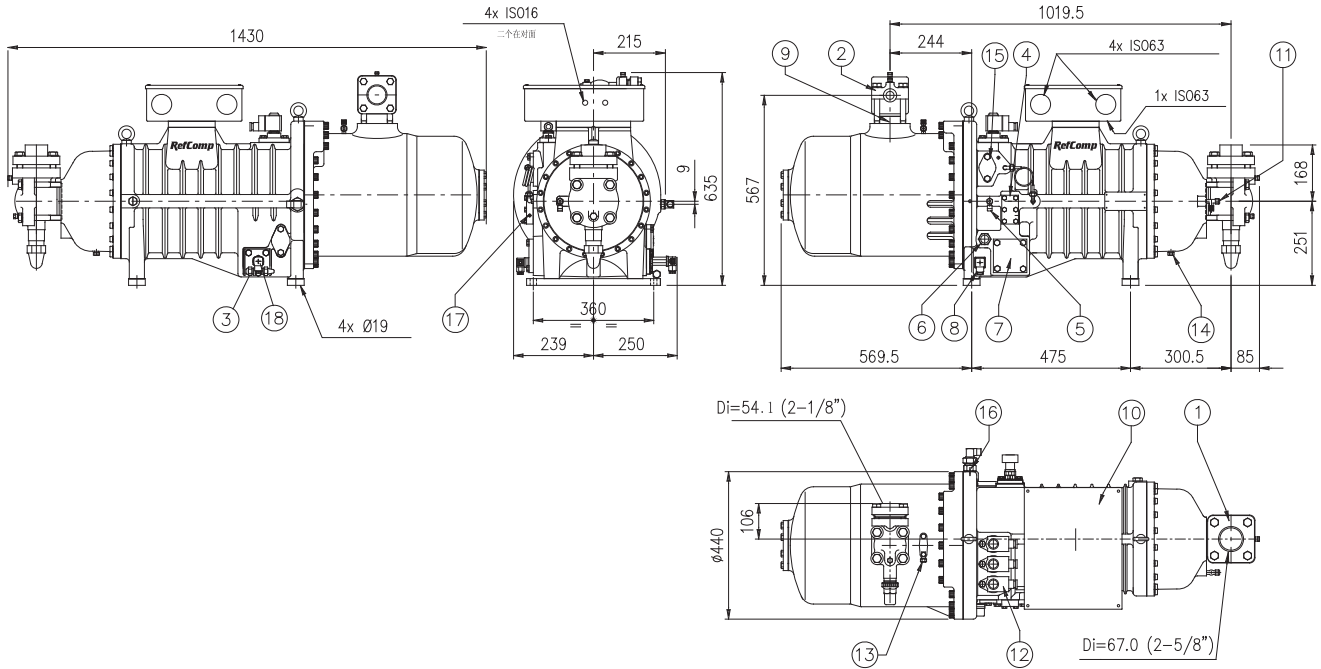
KEY

- 1) Suction shut-off valve (optional)
- 2) Discharge shut-off valve
- 3) Oil fill/drain valve 3/8" SAE-FLARE
- 4) Oil cooler connections (optional)
- 5) Oil pressure 1/4" SAE-FLARE
- 6) Oil sight glass
- 7) Oil filter
- 8) Crankcase heater
- 9) Non return valve
- 10) Electrical box
- 11) Low pressure gas 1/4" SAE-FLARE
- 12) Solenoid valves for part-load operation.
- 13) High pressure gas 1/4" SAE-FLARE
- 14) Oil drain motor housing 1/4"-18 NPT
- 15) Solenoid valve connection (step-less capacity control)
- 16) Liquid injection $\varnothing 0.63$ "/economiser $\varnothing 0.866$ "(optional)
- 17) Discharge temperature sensor 1/8"NPT (optional)

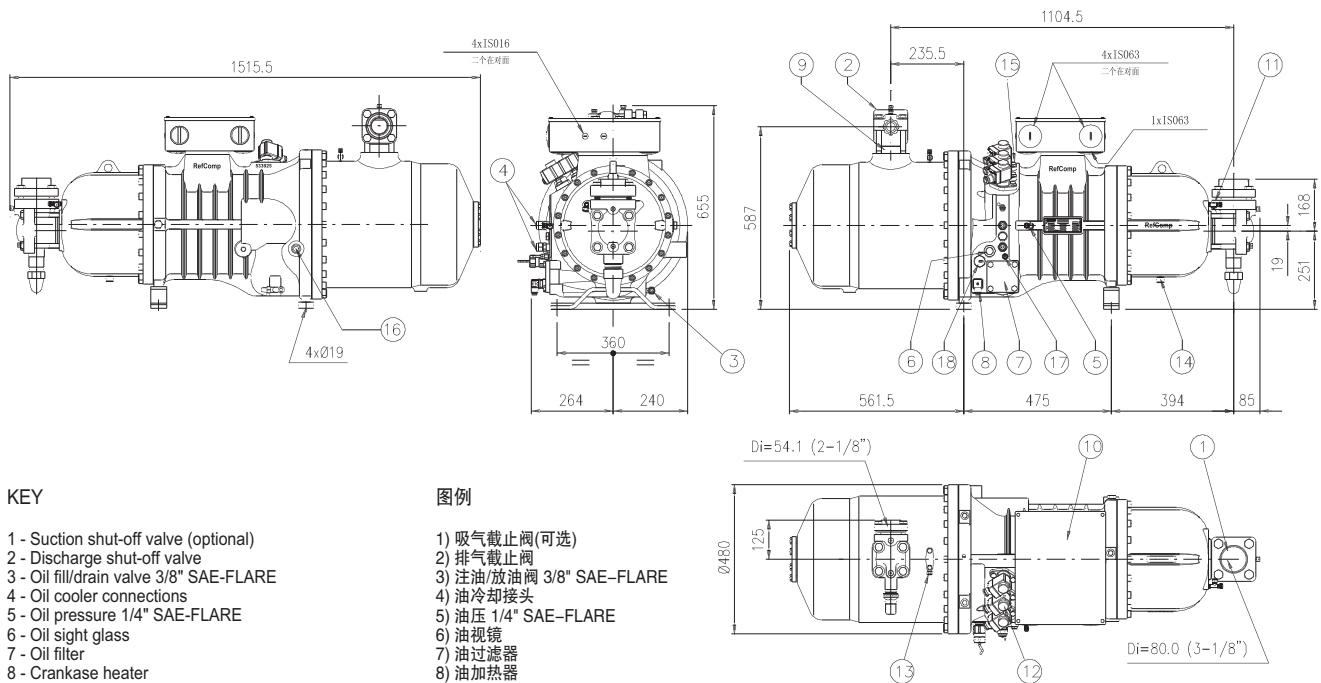
图例

- 1) 吸气截止阀(可选)
- 2) 排气截止阀
- 3) 注油/放油阀 3/8" SAE-FLARE
- 4) 油冷却接头
- 5) 油压 1/4" SAE-FLARE
- 6) 油视镜
- 7) 油过滤器
- 8) 油加热器
- 9) 止回阀
- 10) 接线盒
- 11) 低压 1/4" SAE-FLARE
- 12) 制冷量调节电磁阀
- 13) 高压 1/4" SAE-FLARE
- 14) 放油口
- 15) 电磁阀 (能级调节控制)
- 16) 喷液接口 $\varnothing 0.63$ "/经济器接口 $\varnothing 0.866$ " (可选)
- 17) 油温传感器 1/8" NPT (可选)

SWOH 7500_9000
SWOL 6500_8000



SWOH 10500_11500_12500
SWOL 9500_10500_11500



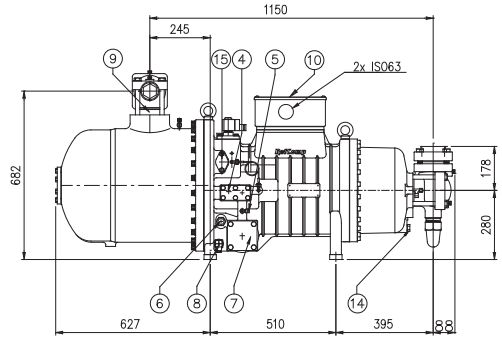
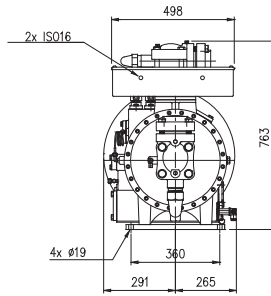
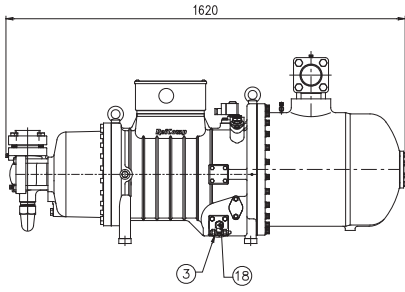
KEY

- 1 - Suction shut-off valve (optional)
- 2 - Discharge shut-off valve
- 3 - Oil fill/drain valve 3/8" SAE-FLARE
- 4 - Oil cooler connections
- 5 - Oil pressure 1/4" SAE-FLARE
- 6 - Oil sight glass
- 7 - Oil filter
- 8 - Crankcase heater
- 9 - Non return valve
- 10 - Electrical box
- 11 - Low pressure gas 1/4" SAE-FLARE
- 12 - Solenoid valves for part-load operation.
- 13 - High pressure gas 1/4" SAE-FLARE
- 14 - Oil drain
- 15 - Solenoid valve connection (step-less capacity control)
- 16 - Liquid injection $\varnothing 0.63$ "/economiser $\varnothing 0.866$ "(optional)
- 17 - Discharge temperature sensor 1/8"NPT (optional)
- 18 - Oil level control (optional)

图例

- 1) 吸气截止阀(可选)
- 2) 排气截止阀
- 3) 注油/放油阀 3/8" SAE-FLARE
- 4) 油冷却接头
- 5) 油压 1/4" SAE-FLARE
- 6) 油视镜
- 7) 油过滤器
- 8) 油加热器
- 9) 止回阀
- 10) 接线盒
- 11) 低压 1/4" SAE-FLARE
- 12) 制冷量调节电磁阀
- 13) 高压 1/4" SAE-FLARE
- 14) 放油口
- 15) 电磁阀 (能级调节控制)
- 16) 喷液接口 $\varnothing 0.63$ " / 经济器接口 $\varnothing 0.866$ " (可选)
- 17) 油温传感器 1/8"NPT (可选)
- 18) 油位控制器 (可选)

SWOH 14000_16000_19000
SWOL 13000_15000_17000

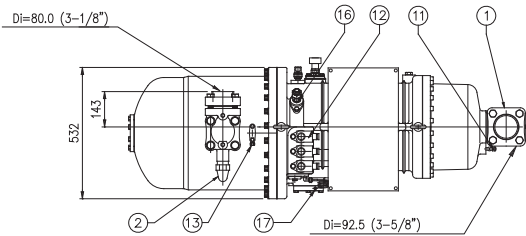


KEY

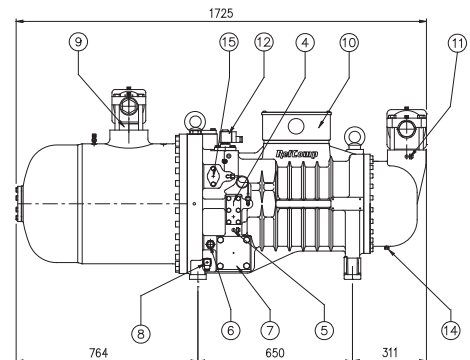
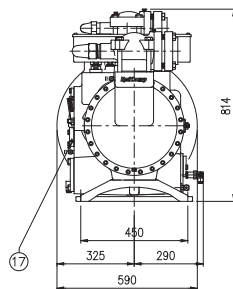
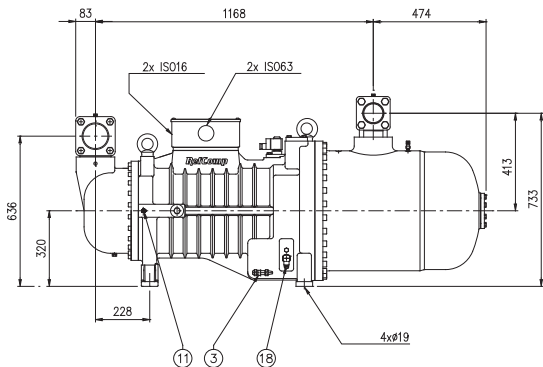
- 1) Suction shut-off valve (optional)
- 2) Discharge shut-off valve
- 3) Oil fill/drain valve 3/8" SAE-FLARE
- 4) Oil cooler connections (optional)
- 5) Oil pressure 1/4" SAE-FLARE
- 6) Oil sight glass
- 7) Oil filter
- 8) Crankcase heater
- 9) Non return valve
- 10) Electrical box
- 11) Low pressure gas 1/4" SAE-FLARE
- 12) Solenoid valves for part-load operation.
- 13) High pressure gas 1/4" SAE-FLARE
- 14) Oil drain motor housing M16
- 15) Solenoid valve connection (step-less capacity control)
- 16) Liquid injection Ø0,866"/economiser Ø1,102"(optional)
- 17) Discharge temperature sensor 1/8"NPT (optional)
- 18) Oil level control (optional)

图例

- 1) 吸气截止阀 (可选)
- 2) 排气截止阀
- 3) 注油/放油阀 3/8" SAE-FLARE
- 4) 油冷却接头
- 5) 油压 1/4" SAE-FLARE
- 6) 油视镜
- 7) 油过滤器
- 8) 油加热器
- 9) 止回阀
- 10) 接线盒
- 11) 低压 1/4" SAE-FLARE
- 12) 制冷量调节电磁阀
- 13) 高压 1/4" SAE-FLARE
- 14) 放油口
- 15) 电磁阀 (能级调节)
- 16) 喷液接口 Ø0.866"/经济器接口 Ø1.102" (可选)
- 17) 油温传感器 1/8" NPT (可选)
- 18) 油位控制器 (可选)



SWOH 21000_24000_25000
SWOL 20000_22000_23000

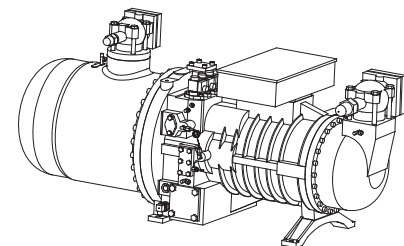
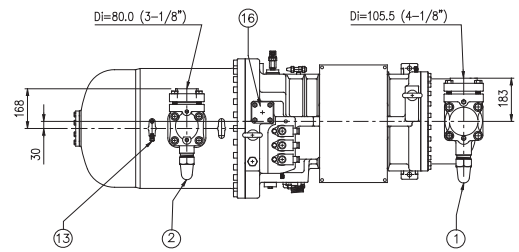


KEY

- 1) Suction shut-off valve (optional)
- 2) Discharge shut-off valve
- 3) Oil fill/drain valve 3/8" SAE-FLARE
- 4) Oil cooler connections (optional)
- 5) Oil pressure 1/4" SAE-FLARE
- 6) Oil sight glass
- 7) Oil filter
- 8) Crankcase heater
- 9) Non return valve
- 10) Electrical box
- 11) Low pressure gas 1/4" SAE-FLARE
- 12) Solenoid valves for part-load operation.
- 13) High pressure gas 1/4" SAE-FLARE
- 14) Oil drain motor housing 1/4"-18 NPT
- 15) Solenoid valve connection (step-less capacity control)
- 16) Liquid injection Ø1,653"/economiser Ø1,653"(optional)
- 17) Discharge temperature sensor 1/8"NPT (optional)
- 18) Oil level control (optional)

图例

- 1) 吸气截止阀(可选)
- 2) 排气截止阀
- 3) 注油/放油阀 3/8" SAE-FLARE
- 4) 油冷却接头
- 5) 油压 1/4" SAE-FLARE
- 6) 油视镜
- 7) 油过滤器
- 8) 油加热器
- 9) 止回阀
- 10) 接线盒
- 11) 低压 1/4" SAE-FLARE
- 12) 制冷量调节电磁阀
- 13) 高压 1/4" SAE-FLARE
- 14) 放油口
- 15) 电磁阀 (能级调节控制)
- 16) 喷液接口 Ø1.653"/经济器接口 Ø1.653" (可选)
- 17) 油温传感器 1/8" NPT (可选)
- 18) 油位控制器 (可选)





福建雪人股份有限公司

地址：福建省闽江口工业区洞山西路

电话：0591-28701111 传真：0591-28709222

Http://www.snowkey.com E-mail:info@snowkey.com

福建雪人股份有限公司-上海分公司

地址：上海市杨浦区政益路47号806室

电话：021-55087153

传真：021-55087153-818

FUJIAN SNOWMAN CO.,LTD.

Add: Dongshan Road, Minjiangkou Industrial District, Fuzhou, Fujian, China.

Tel: +86 591 28701111 Fax: +86 591 28709222

Http://www.snowkey.com E-mail:info@snowkey.com

FUJIAN SNOWMAN CO.,LTD .SHANGHAI BRANCH

Add: Room806,No.47.Zhengyi Road,Yangpu District, Shanghai.

Tel: +86 21 55087153

Fax: +86 21 55087153-818